

INSTRUCTIONS:

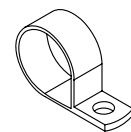
1. THREAD 1-1/2IN PIPE NIPPLE ONTO 90DEG ELBOW (PIPE SEALANT RECOMMENDED)
2. THREAD FUEL SOLENOID ONTO PIPE NIPPLE (NOTE DETAIL "A")
3. REMOVE THE 4 BOLTS SECURING THE FUEL TANK
4. LIFT FUEL TANK OUT OF WAY TO MOUNT THE CONTROL BOX
5. MOUNT THE CONTROL BOX TO THE FUEL TANK SUPPORT TRAY USING (x2) 1/4-20 X 3/4IN BOLTS AND (x2) 1/4 SPLIT LOCKWASHER
6. FASTEN WIRE LABELED 2 TO THE POSITIVE TERMINAL OF THE STARTER SOLENOID
7. FASTEN WIRE LABELED 1 TO GROUND
8. PLUG WIRES 1 AND 21 INTO FUEL SOLENOID
9. PLUG THE POWER CORD INTO 1 OF THE 20AMP THREE PRONG RECEPTACLES
10. SECURE POWER CORD TO THE RECEPTACLE BOX USING THE 3/8IN NYLON CLAMPS

TO START:

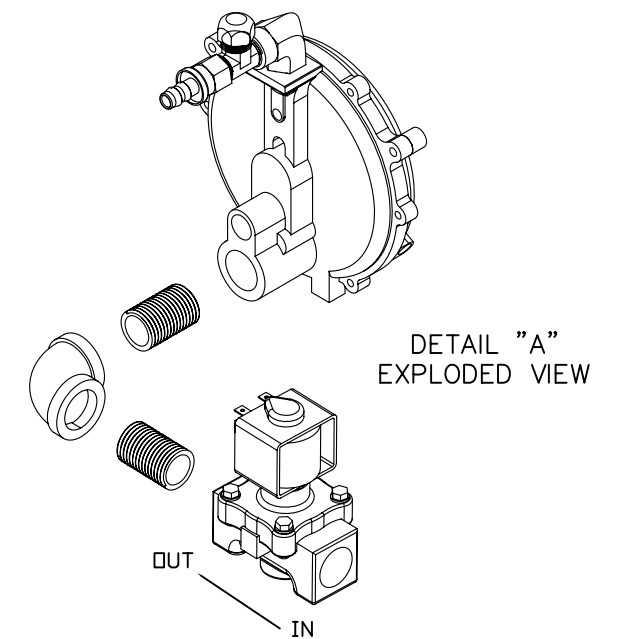
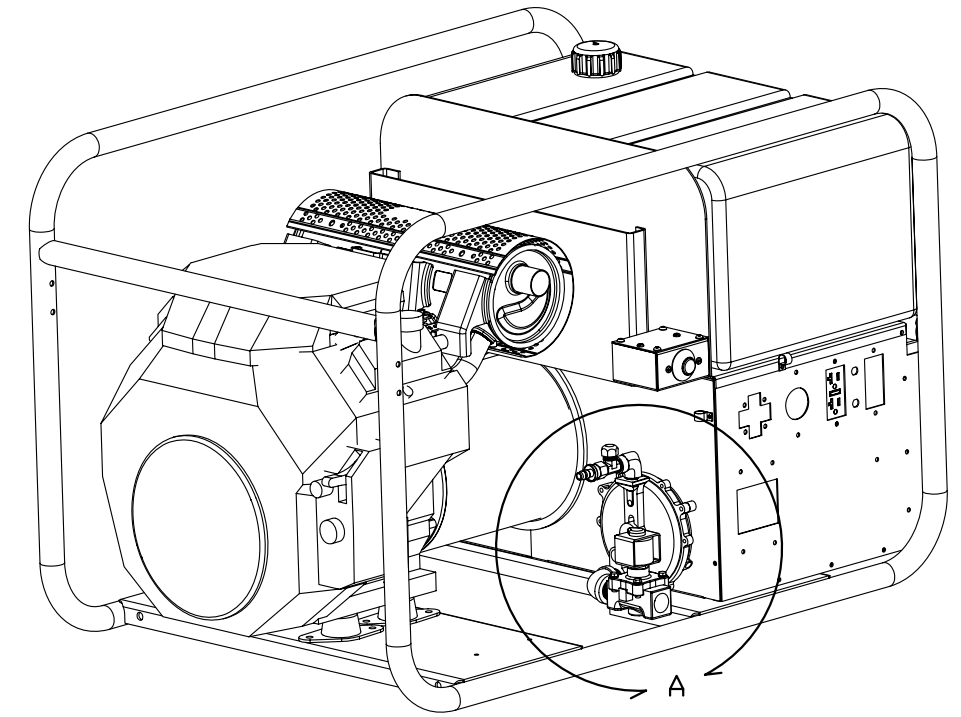
HOLD DOWN CONTROL BOX BUTTON, TURN KEY, UNIT WILL START. ONCE UNIT GENERATES OUTPUT (ABOUT 1 SECOND) RELEASE BUTTON.

NOTE:

IF UNIT SHUTS OFF, THE GENERATOR WILL LOSE OUTPUT AND SOLENOID WILL CLOSE. TO RESTART, FOLLOW THE "TO START" INSTRUCTIONS



-METAL TUBE CLAMPS NOT USED WITH HPS12000HE



HPS12000HE/E (49 STATE)
INSTRUCTION SHEET FOR 12 V DC
LOW PRESSURE VAPOR FUEL SOL.
(FOR TRI-FUEL MODELS)