

# WINGCO®

120V 5-20R

30A 240V L6-30R

40A 120/240V 14-50R



20

20

L1

L2



*YOUR GEN*



NEUTRAL BONDED TO FRAME  
NEUTRE MIS A LA MASSE A LA  
CARCASSE DU MOTEUR

# 2019

## FROM THE OWNERS

Thank you for looking into WINCO products and researching the WINCO brand. With so many options in the marketplace, we are grateful that you rely on us for your generator needs.

Above everything, we want to get the appropriate generator for you. Our products aren't for everyone or for every situation. Sometimes, we'll even refer you to a different brand because we value you more than a sale. Our generators are mostly for people who need their generator for...life rather than for leisure. Whether it is your farm, your critical care facility, your pump, your solar backup, your business, or your home; we make a generator that will power it and/or protect it. No consumer grade, plastic made, foreign private labeled engines here. No marketing gimmicks, just reliable products.

We are proud of our business, our relationships, and our product. All of these, working together, create an ecosystem where you don't get lost in a multi-billion dollar organization. When you buy a WINCO, you are not a dollar amount, you are a person.

Respectfully,

The Call Family

## TABLE OF CONTENTS

<b>PORTABLES</b> _____	<b>4</b>
PORTABLE ACCESSORIES _____	6
<b>EMERGENCY STANDBY</b> _____	<b>8</b>
STANDBY ACCESSORIES _____	9
<b>STANDBY/PRIME DIESEL</b> _____	<b>11</b>
DIESEL ACCESSORIES _____	12
<b>ASCO TRANSFER SWITCHES</b> _____	<b>14</b>
<b>POWER TAKE-OFF</b> _____	<b>16</b>
PTO ACCESSORIES _____	17
<b>2-BEARING GENERATORS</b> _____	<b>19</b>



**WINCO**®

**LIL' DOG 3000**



**⚠ DANGER**  
 NO OPEN FLAME  
ENGINES PRODUCE CARBON  
MONOXIDE WHICH IS AN ODORLESS,  
SEEKLY POISON.  
DO NOT OPERATE IN AN ENCLOSED AREA.

**PORTABLES**

# INDUSTRIAL SERIES (GASOLINE)<sup>(1)</sup>

When it comes to generators for work, the old adage, "You get what you pay for" is spot-on. Avoid paying the price of a big-box retail store generator that comes standard with questionable construction and a fine-print warranty. Save the headaches and downtime with a generator built for what you need it to do.

Model	Output		Engine	Fuel Tank Capacity	Receptacles			Shipping		MSRP
	Running Watts	Voltage			120 Volt	120/240 Volt	240 Volt	Weight	Dimensions (in)	
W3000H	2,400	120	Honda GC160	2 Qt	5-20R	-	-	72 lbs	25 x 19 x 19	\$750
WC6000HE	5,500	120/240	Honda GX340	7 Gal	5-20R	L14-30	-	210 lbs	36 x 26 x 24	\$2,600
W6010DE <sup>(1)</sup>	5,160	120/240	Kohler KD440	7 Gal	5-20R	L14-30	L6-30	268 lbs	36 x 26 x 24	\$4,730
W10000VE	9,600	120/240	B&S Vanguard	7 Gal	2 x 5-20R	14-60	L6-30	306 lbs	36 x 26 x 24	\$3,140
WL12000HE	10,800	120/240	Honda GX630	15 Gal	3 x 5-20R	14-60	L6-30	452 lbs	50 x 27 x 26	\$4,040
WL12000HE 50A	10,800	120/240	Honda GX630	15 Gal	3 x 5-20R	CS6365C	L6-30	452 lbs	50 x 27 x 26	\$4,060
WL18000VE	15,000	120/240	B&S Vanguard	15 Gal	3 x 5-20R L5-20	14-60	L6-30	534 lbs	50 x 27 x 32	\$4,900
WL22000VE	19,000	120/240	B&S Vanguard	15 Gal	2 x 5-20R	2X 14-60R L6-30R	-	502 lbs	44 x 31 x 37	\$6,100

NOTES: (1) The W6010DE is diesel fuel only.

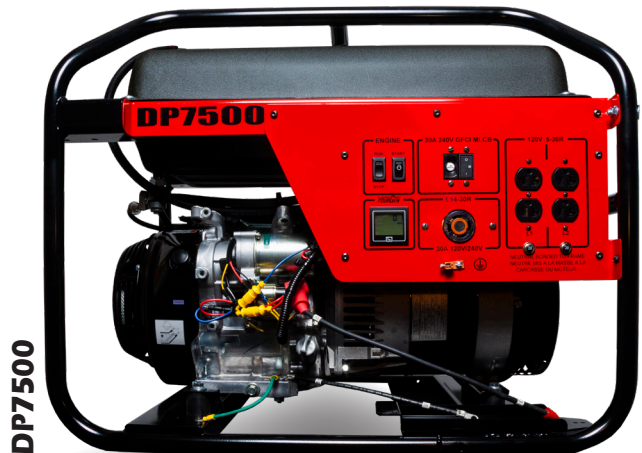


WL22000VE

# DYNA PROFESSIONAL SERIES (GASOLINE)

The DP Series are nice units at nice prices. They all come standard with a commercial 3-Year Warranty, full-panel GFCI protection, and Honda GX engines.

Model	Output		Engine	Fuel Tank Capacity	GFCI Receptacles		Shipping		MSRP
	Running Watts	Voltage			120 Volt	120/240 Volt	Weight	Dimensions (in)	
DP3000	3,000	120/240	Honda GX160	1 Gal	5-20R	-	104 lbs	34 x 24 x 27	\$1,110
DP5000	4,500	120/240	Honda GX270	7 Gal	5-20R	L14-30	178 lbs	30 x 22 x 24	\$1,800
DP7500	6,000	120/240	Honda GX390	7 Gal	5-20R	L14-30	210 lbs	30 x 22 x 24	\$2,140



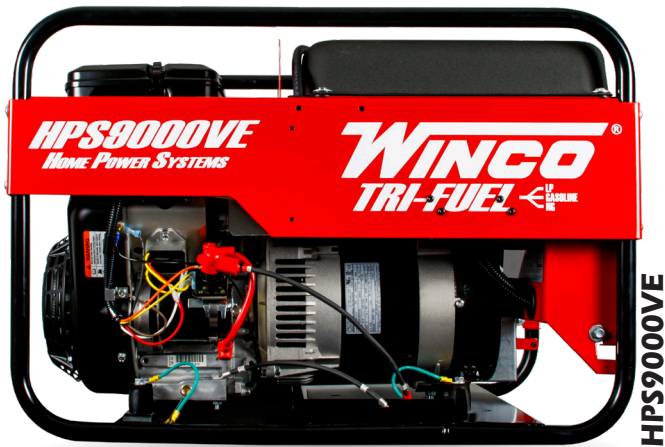
DP7500

# HOME POWER SERIES (MULTI-FUEL)

Multi-Fuel. Multi-Purpose. Multi-Functionability. Multi-Ways to convince the spouse you need a generator. We're bad at consumer grade so we just added some fuel choices to what would otherwise be a commercial unit. The market is full of big promises and cheap prices when it comes to multi-fuel. Those options are fine if the most important thing you need to power is your TV. If you have more valuable goods that need to be powered, our advice isn't to skimp on the generator.

Model	Output		Engine	Fuel Tank Capacity	Receptacles		Shipping		MSRP
	Running Watts <sup>(5)</sup>	Voltage			120 Volt	120/240 Volt	Weight	Dimensions (in)	
HPS6000HE <sup>(2)</sup>	5,500	120/240	Honda GX340	7 Gal	5-20R GFCI	L14-30	224 lbs	33 x 25 x 26	\$2,670
HPS9000VE	8,000	120/240	B&S Vanguard	7 Gal	2 x 5-20R GFCI	L14-30	267 lbs	33 x 25 x 27	\$3,080
HPS12000HE <sup>(3)</sup>	10,800	120/240	Honda GX630	15 Gal	2 x 5-20R GFCI	L14-30 14-60 <sup>(4)</sup>	460 lbs	50 x 40 x 36	\$4,660

NOTES: (1) Based on gasoline fuel. Derate 10% for LP Gas and 20% for Natural Gas. (2) HPS6000HE bi-fuel only (NG and Gasoline) (3) 4-Wheel dolly kit standard with HP-S12000HE (4) The 14-60 receptacle is not GFCI protected.

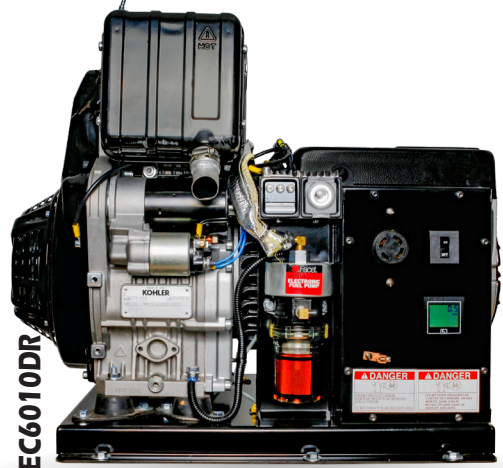


# VEHICLE MOUNTED (GASOLINE)

The EC units are close cousins to our Industrial Portables. When properly installed and maintained, they will provide many hours of consistent power to whatever piece(s) of equipment they are providing electricity to.

Model	Output		Engine	Fuel Tank Capacity	Receptacles			Shipping		MSRP
	Running Watts	Voltage			120 Volt	120/240 Volt	240 Volt	Weight	Dimensions (in)	
EC6010DR <sup>(1)</sup>	5,160	120/240	Kohler KD440	N/A	-	L14-30	-	270 lbs	32 x 24 x 24	\$4,330
EC18000VE	15,000	120/240	B&S Vanguard	N/A <sup>(2)</sup>	-	14-60	-	354 lbs	50 x 27 x 32	\$3,800
EC22000VE <sup>(3)</sup>	19,000	120/240	B&S Vanguard	N/A <sup>(2)</sup>	-	-	-	503 lbs	50 x 27 x 32	\$5,300

NOTES: (1) The EC6010DR is diesel fuel only. (2) Optional 15 gallon fuel system available. See portable accessories for details. (3) Price is for single phase only, 3-Phase options are available.



# PORTABLE ACCESSORIES

Part Number	Description	Compatible Model	Shipping		MSRP
			Weight	Dimensions (in) <sup>(1)</sup>	
<b>DOLLY KITS</b>					
16199-026	HPS SERIES 2-WHEEL DOLLY KIT	HPS6000HE/HPS9000VE	32 lbs	30 x 15 x 5	\$190
16199-036	W SERIES 2-WHEEL DOLLY KIT	WC6000HE/W6010DE/W10000VE	25 lbs	30 x 15 x 5	\$190
16199-039	DP SERIES 2-WHEEL DOLLY KIT	DP5000/DP7500	24 lbs	24 x 10 x 5	\$190
16199-032	WL SERIES 4-WHEEL DOLLY KIT	WL12000HE/WL18000VE - standard on HPS12000HE	58 lbs	26 x 26 x 9	\$290
16199-038	LARGE 4-WHEEL DOLLY KIT	WL22000VE	60 lbs	27 x 26 x 9	\$300
<b>GENERATOR COVERS</b>					
64444-012	SMALL W/O DOLLY KIT	HPS6000HE/HPS9000VE	3 lbs	16 x 12 x 6	\$60
64444-014	SMALL W/ DOLLY KIT	HPS6000HE/HPS9000VE	3 lbs	16 x 12 x 6	\$90
64444-013	LARGE	HPS12000HE/WL12000HE/WL18000VE	5 lbs	16 x 12 x 6	\$90
64444-016	MEDIUM	DP5000/DP7500/WC6000HE/W6010DE/W10000VE	5 lbs	16 x 12 x 6	\$90
<b>EMERGENCY TRANSFER SWITCH</b>					
64488-000	60/30 AMP	HPS6000HE/HPS9000VE	45 lbs	16 x 16 x 13	\$440
64488-003	60/60 AMP	HPS12000HE	48 lbs	16 x 16 x 13	\$490
XRK0603D	60/30 AMP	ALL MODELS INCLUDING GFCI PANELS	23 lbs	25 x 15 x 5	\$330
XRK0606D	60/60 AMP	ALL MODELS INCLUDING GFCI PANELS	23 lbs	25 x 15 x 5	\$330
PBN30	30A NEMA L14-30 INLET BOX	ALL MODELS WITH NEMA L14-30	2 lbs	7 x 7 x 5	\$70
64488-004	60A NEMA 14-60 CORD & BOX	10kW - 22kW	32 lbs	16 x 16 x 13	\$390
PC3020M	30A 20FT CORD	ALL MODELS WITHOUT NEMA L14-30	7 lbs	7 x 7 x 5	\$110
<b>PLUG IN VOLT METER</b>					
24743-000		ALL MODELS	1 lb	8 x 6 x 6	\$40
<b>BATTERY CHARGER</b>					
72036-022		6kW - 18kW	2 lbs	8 x 6 x 6	\$50
<b>BATTERIES</b>					
80765-012	12V U1 300 CCA	WC6000HE/W10000VE/WL12000HE/W6010DE/HPS12000HE	17 lbs	8 x 6 x 8	\$70
80765-013	12V GROUP 26 500 CCA	WL18000VE/EC18000VE/EC22000VE	20 lbs	9 x 8 x 8	\$150
<b>MAINTENANCE KITS</b> *For older models contact your WINCO representative					
16200-000	GC SERIES	W3000H	3.5 lbs	9 x 9 x 6	\$36
16200-001	GX160/200	DP3000	3.5 lbs	9 x 9 x 6	\$36
16200-002	GX270/340	WC6000HE/HPS6000HE	5.5 lbs	9 x 9 x 6	\$45
16200-003	GX270/340 LOW PROFILE	DP5000/DP7500	5.5 lbs	9 x 9 x 6	\$45
16200-007	VANGUARD 18HP	HPS9000VE/W10000VE	6 lbs	9 x 9 x 6	\$59
16200-005	VANGUARD 16HP	WL12000HE/HPS12000HE	7 lbs	9 x 9 x 9	\$84
16200-011	VANGUARD 35HP	WL18000VE/EC18000VE/WL22000VE/EC22000VE	7 lbs	9 x 9 x 6	\$66
16200-014	KOHLER K440	W6010DE/EC6010DR	5.5 lbs	9 x 9 x 6	\$140
<b>PLUGS</b>					
300137	NEMA 14-60 60AMP	W10000VE/WL12000HE/WL18000VE/HPS12000HE	1 lb	8 x 6 x 6	\$30
64492-000	NEMA L14-30 30AMP	DP5000/DP7500/WC6000HE/HPS6000HE/HPS9000VE	1 lb	8 x 6 x 6	\$30
64493-000	CS6365C 50AMP	WL12000HE 50A	1 lb	8 x 6 x 6	\$70
97360-002	NEMA 14-50 50AMP	WL22000VE	1 lb	8 x 6 x 6	\$40
<b>LOW PRESSURE FUEL SOLENOID</b>					
64854-005		HPS6000HE/HPS9000VE	4 lbs	8 x 6 x 6	\$240
64854-009		HPS12000HE	4 lbs	8 x 6 x 6	\$240
<b>FUEL SYSTEM</b>					
19022-400	15 GAL FUEL SYSTEM	EC18000VE/EC22000VE	32 lbs	28 x 19 x 22	\$300

NOTES: (1) When ordering with a generator, most items are shipped in the generator box. (2) Replaces NEMA 14-60 60AMP receptacle



**WINCO**®  
PACKAGED STANDBY SYSTEM

**STANDBY**

# EMERGENCY STANDBY

## AIR-COOLED (VAPOR FUELED)

While these units are exceptional for emergency standby, they are also proving their worth in remote prime applications. Whether it is powering a pump in the middle of a field or backup for solar panels at the cabin; these gensets just work.

Model	Voltage	Output						CB Amps	Engine	Shipping		MSRP
		LP			Natural Gas					Weight	Dimensions (in)	
		Watts	kVa	Amps	Watts	kVa	Amps					
PSS8B2W	120/240	8,400	8.4	35	7,600	7.6	32	35	B&S Vanguard	400 lbs	45 x 30 x 32	\$4,280
PSS8B2W SOLAR	120/240	6,720	6.7	28	6,080	6	25.3	25	B&S Vanguard	460 lbs	49 x 35 x 35	\$4,770
PSS12H2W	120/240	12,000	12	50	10,000	10	41	50	Honda GX690	483 lbs	48 x 32 x 35	\$5,550
PSS12H2W SOLAR	120/240	8,000	8	33	9,600	9.6	40	40	Honda GX690	532 lbs	48 x 32 x 35	\$6,170
PSS20B2W	120/240	17,000	17	71	15,000	15	52	80	B&S Vanguard	875 lbs	61 x 38 x 43	\$8,450



PSS12H2W SOLAR

## LIQUID-COOLED (VAPOR FUELED)

The PSS Liquid-Cooled units are not complex. We just combined the best components we could find (Industrial Engines, Stamford genends, Deep Sea controllers, Square-D breakers, etc.), made all the sheet metal in-house, and then called the project complete.

Model	Voltage	Output(1)						CB Amps	Engine	Shipping Housed		MSRP	
		LP			Natural Gas					Weight	Dimensions (in)	Open	Housed
		Watts	kVa	Amps	Watts	kVa	Amps						
PSS30	120/240	29,000	29	121	27,120	35	113	100	Z 2.8L	1,570 lbs	86 x 40 x 51	\$15,360	\$17,150
PSS60	120/240	56,000	56	233	55,000	55	229	250	GM 5.7L	2,390 lbs	110 x 40 x 60	\$23,600	\$26,300
PSS90	120/240	80,000	80	333	90,000	90	375	350	GM 5.7L T	2,964 lbs	113 x 47 x 67	\$27,300	\$31,200
PSS150	120/240	125,000	125	520	125,000	150	625	600	PSI 8.8L TAC	4,700 lbs	136 x 86 x 92	\$48,860	\$54,980

Notes: (1) Output information is single phase, see spec sheets for 3-phase information. (2) Paralleling units available in 300kW, 450kW, and 600kW.



PSS21



# STANDBY ACCESSORIES

Part Number	Description	Compatible Model	Shipping		MSRP
			Weight	Dimensions (in)	
<b>ENGINE OIL HEATER</b>					
15809-003		PSS12/PSS20	4 lbs	8.5 x 8.5 x 4	\$250
300484-5		PSS8	4 lbs	8.5 x 8.5 x 4	\$280
<b>VAPOR FUEL STRAINERS</b>					
16243-000	3/4 in.	PSS8/PSS12/PSS20/PSS30	2.5 lbs	8 x 6 x 6	\$50
98573-125	1 1/4 in.	PSS60-PSS600	5 lbs	8 x 6 x 6	\$50
<b>BATTERIES</b>					
80765-013	GROUP 26 500 CCA	PSS8/PSS12/PSS20	20 lbs	9 x 8 x 8	\$150
80765-010	GROUP 24 650 CCA	PSS30-PSS90	20 lbs	11 x 8 x 9	\$160
80765-011 <sup>(1)</sup>	GROUP 31 900 CCA	PSS150	25 lbs	11 x 8 x 9	\$230
<b>BATTERY HEATERS</b>					
300484-3		PSS8/PSS12/PSS20	3 lbs	8 x 8 x 4	\$170
350279-4 <sup>(1)</sup>		PSS30-PSS600	5 lbs	14 x 8 x 5	\$240
<b>MAINTENANCE KITS</b> *For older models, contact your WINCO representative					
16200-006	HONDA GXV630/690 GASEOUS	PSS12	5.5 lbs	9 x 9 x 9	\$79
16200-008	VANGUARD 16HP	PSS8	5.5 lbs	9 x 9 x 6	\$59
16200-009	VANGUARD 35HP	PSS20	6 lbs	9 x 9 x 6	\$62
<b>FACTORY INSTALLED OPTIONS</b>					
99367-000 <sup>(1)</sup>	LP LIQUID WITHDRAWAL	PSS30-PSS600		FACTORY INSTALLED	\$1,210
352030-1	NFPA 110 LEVEL 1 COMPLIANT UPGRADE	PSS30-PSS600		FACTORY INSTALLED	\$1,990
64921-004 <sup>(1)</sup>	PERMANENT MAGNET GENERATOR MX321 0.5% Regulation	PSS60-PSS600		FACTORY INSTALLED	\$1,285
72036-019 <sup>(1)</sup>	10 AMP BATTERY CHARGER W/ FAIL CONTACT <sup>(2)</sup>	PSS30-PSS600		FACTORY INSTALLED	\$430
300507 <sup>(1)</sup>	GENERATOR STRIP HEATER	PSS30-PSS600		FACTORY INSTALLED	\$490
<b>DIGITAL CONTROLLER OPTIONS</b>					
358456-1	DSE2548 REMOTE ANNUNCIATOR	DSE7310		SHIPPED LOOSE	\$890
358456-11	DSE2510 REMOTE DISPLAY	DSE7310		SHIPPED LOOSE	\$610
N/A	DSE8610 DIGITAL CONTROLLER	PSS60-PSS150		FACTORY INSTALLED	\$4,900
N/A	DSE8660 DIGITAL CONTROLLER	DSE8610		SHIPPED LOOSE	\$1,880
352014-3	DSE890 WEBNET GATEWAY	DSE4510/DSE7310		FACTORY INSTALLED	\$650

ASCO185 & 300 SERIES SEE PAGE 14

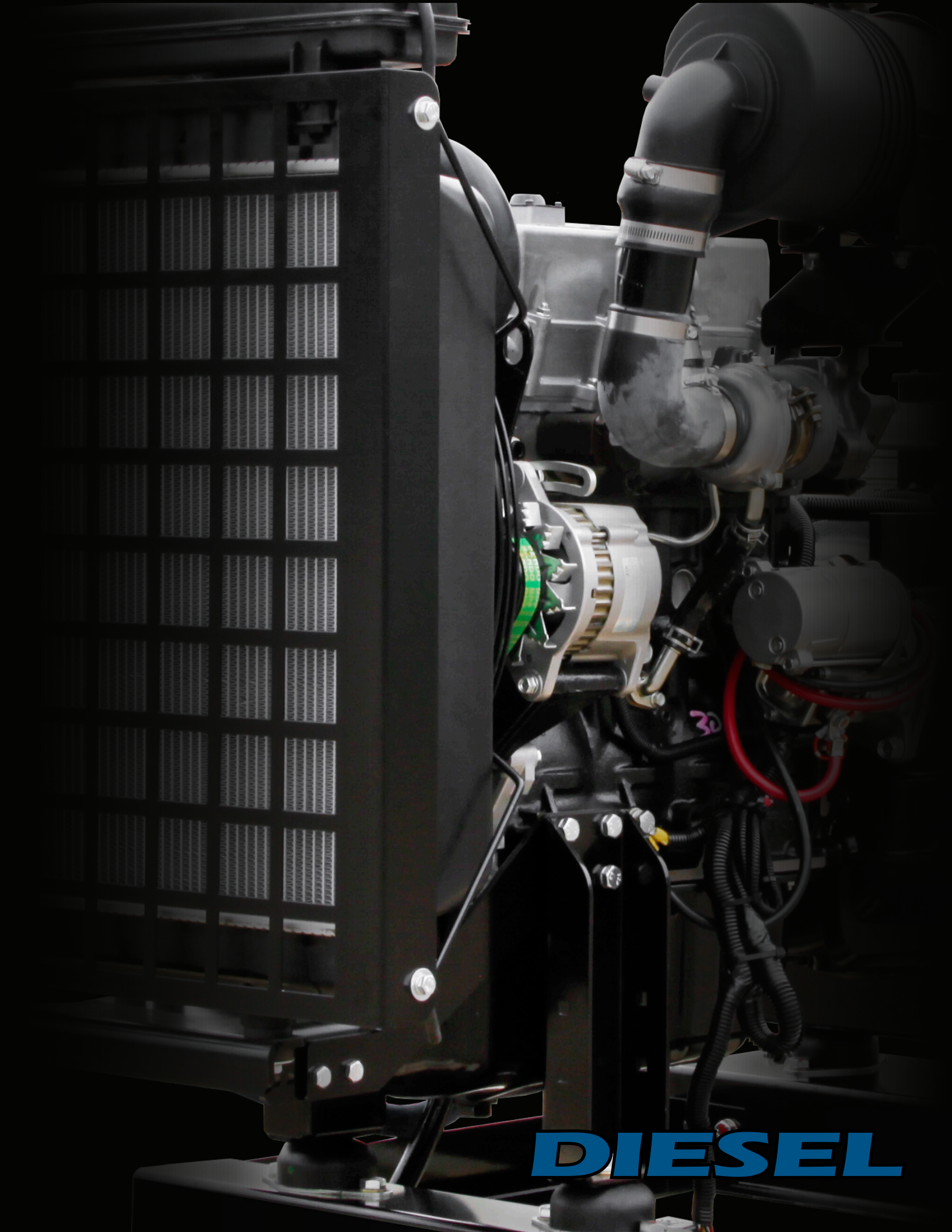
Notes: (1) The PSS300-PSS600 will require one per unit. (2) For NFPA 110 Level 1 compliant upgrade.



REMOTE ANNUNCIATOR

OIL HEATER





**DIESEL**

# STANDBY ONLY DR SERIES

Model	Engine		Shipping				MSRP	
	Model	Tier <sup>(1)</sup>	Weight Open	Weight Housed	Open Dimensions (in)	Housed Dimensions (in)	Open Skid	Housed
DR20I4	Isuzu 4LE1	IVi	1,210 lbs	1,790 lbs	63 x 34 x 34	75 x 34 x 45	\$14,780	\$16,830
DR30I4	Isuzu 4LE1 T	IVi	1,560 lbs	2,260 lbs	82 x 34 x 42	94 x 34 x 51	\$20,980	\$23,410
DR45F4	FPT N45 SM1 T	III	2,025 lbs	3,225 lbs	84 x 41 x 43	103 x 41 x 64	\$21,170	\$25,440
DR65F4	FPT N45 SM2 T	III	2,250 lbs	3,425 lbs	84 x 41 x 45	103 x 41 x 64	\$22,080	\$26,350
DR90F4	FPT N45 TM2 TAC	III	2,700 lbs	3,100 lbs	96 x 40 x 48	107 x 43 x 60	\$24,610	\$28,990
DR100F4	FPT N67 TM1 TAC	III	3,400 lbs	5,050 lbs	108 x 48 x 53	137 x 51 x 80	\$30,250	\$37,610
DR130F4	FPT N67 TM1 TAC	III	3,500 lbs	5,150 lbs	108 x 48 x 53	137 x 51 x 80	\$31,630	\$38,990
DR175F4	FPT N67 TE2 TAC	III	3,600 lbs	5,250 lbs	108 x 48 x 53	137 x 48 x 80	\$38,580	\$45,940
DR250F4 <sup>(2)</sup>	FPT C87 TE1D TAC	III	6,300 lbs	8,740 lbs	144 x 59 x 64	181 x 59 x 84	\$62,250	\$72,220
DR300F4 <sup>(2)</sup>	FPT C10 TE1D TAC	III	6,800 lbs	8,940 lbs	144 x 59 x 63	180 x 59 x 87	\$69,770	\$79,740
DR350F4 <sup>(2)</sup>	FPT C13 TE3X TAC	III	7,150 lbs	9,590 lbs	144 x 59 x 65	180 x 59 x 80	\$72,210	\$82,180

Note: (1) All engines are Flex. (2) DR250, DR300, and DR350 are available in 3-phase only. (2) Paralleling units available in 500kW, 600kW, and 700kW.

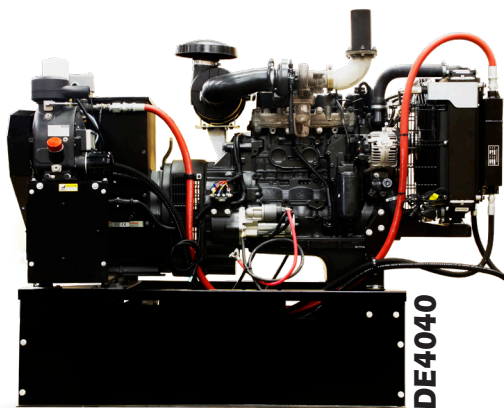
# PRIME POWER DE SERIES

Model	Output		Engine		Weight	Shipping		MSRP
	1-Phase	3-Phase	Model	Tier		Dimensions W/O Tank (in)	Dimensions W/ Tank (in)	
DE20I4	17,000	N/A	Isuzu 4LE1	IVi Flex	950 lbs	49 x 25 x 34	54 x 34 x 44	\$12,240
DE30I4	29,000	30,000	Isuzu 4LE1 T	III Flex	1,056 lbs	57 x 25 x 43	57 x 34 x 52	\$15,840
DE45F4	40,000	45,000	FPT N45 SM1	III Flex	1,886 lbs	72 x 29 x 51	72 x 34 x 61	\$19,150
DE4040 <sup>(1)</sup>	33,500	40,000	FPT N45 SM2	III Flex	2,250 lbs	70 x 36 x 34	70 x 36 x 62	\$25,930
DE4040 <sup>(1)</sup>	33,500	40,000	FPT F5	IV Final	2,250 lbs	76 x 33 x 48	76 x 33 x 58	\$31,100
DE50	47,500	47,500	FPT F5	IV Final	2,250 lbs	80 x 34 x 47	80 x 34 x 57	\$24,280

Notes: (1) DE4040 comes standard with NK31 Rotorcomp air compressor, 54 gallon fuel tank, block heater and battery charger.

# MOBILE DIESEL

Model	Output		Engine		Tank Size	Shipping		MSRP
	1-Phase	3-Phase	Model	Tier		Weight	Dimensions	
RP25	19,700	20,000	Isuzu 4LE1FTP	III	175 gal	2,820 lbs	129 x 56 x 72	\$30,240



# DIESEL ACCESSORIES

Part Number	Description	Compatible Model	Shipping		MSRP
			Weight	Dimensions (in)	
<b>BATTERIES</b>					
80765-010	GROUP 24 650 CCA	DR/DE20-DR/DE30	20 lbs	11 x 8 x 9	\$160
80765-011	GROUP 31 900 CCA	DR90-DR130	25 lbs	11 x 8 x 9	\$230
80765-008	GROUP 4D 1050 CCA <sup>(1)</sup>	DR175-DR350	25 lbs	11 x 8 x 9	\$330
<b>BATTERY HEATERS</b>					
350279-4 <sup>(1)</sup>		DR20-DR175	5 lbs	14 x 8 x 5	\$240
<b>FACTORY INSTALLED OPTIONS</b>					
352030-1	NFPA 110 LEVEL 1 COMPLIANT UPGRADE	DR MODELS	FACTORY INSTALLED		\$1,990
64921-004	PERMANENT MAGNET GENERATOR MX321 0.5% Regulation	DR45-DR175	FACTORY INSTALLED		\$1,285
72036-019	10 AMP BATTERY CHARGER W/ FAIL CONTACT <sup>(2)</sup>	DR20-DR175	FACTORY INSTALLED		\$430
300507	GENERATOR STRIP HEATER	DR MODELS	FACTORY INSTALLED		\$490
<b>DIGITAL CONTROLLER OPTIONS</b>					
358456-1	DSE2548 REMOTE ANNUNCIATOR	DSE7310	SHIPPED LOOSE		\$890
358456-11	DSE2510 REMOTE DISPLAY	DSE7310	SHIPPED LOOSE		\$610
N/A	DSE8610 DIGITAL CONTROLLER	DR175-DR350	FACTORY INSTALLED		\$4,900
N/A	DSE8660 DIGITAL CONTROLLER	DSE8610	SHIPPED LOOSE		\$1,880
352014	DSE890 WEBNET GATEWAY	DSE4510/DSE7310	FACTORY INSTALLED		\$650

## TRANSFER SWITCHES

ASCO185 & 300 SERIES SEE PAGE 14

Notes: (1) 2 Batteries required for DR250-DR350 (2) For NFPA Level 1 compliant upgrade.

## DIESEL FUEL TANKS

Part Number	Compatible Model	Gallons	Hours Full Load	Shipping		MSRP
				Appx. Dry Weight	Dimension (in)	
815000-400	DE Models	54 <sup>(1)</sup>	29	150 lbs	63 x 34 x 10	\$850
350041-94	DR20	54 <sup>(1)</sup>	29	150 lbs	63 x 34 x 10	\$850
350041-93		55	31	500 lbs	63 x 34 x 13	\$2,370
350041-108		110	61	700 lbs	63 x 34 x 23	\$2,890
350041-97		155	86	850 lbs	96 x 40 x 13	\$3,500
350041-116	DR30	70	22	500 lbs	82 x 34 x 13	\$2,370
350041-105		151	50	700 lbs	82 x 34 x 25	\$2,890
350041-122		225	72	1,200 lbs	82 x 34 x 35	\$3,500
350041-77Z	DR45/DR65	100	24/22	650 lbs	84 x 41 x 13	\$2,880
350041-78Z		210	51/46	1,050 lbs	84 x 41 x 25	\$3,600
350041-79Z		310	76/68	1,350 lbs	84 x 41 x 36	\$4,540
350041-97	DR90	155	22	850 lbs	63 x 34 x 33	\$3,500
350041-107		330	48	1,400 lbs	96 x 40 x 36	\$4,790
350041-124		495	71	1,750 lbs	142 x 40 x 35	\$5,700
350041-98Z	DR100/DR130/DR175	230	29/26/18	1,300 lbs	109 x 48 x 21	\$3,980
350041-119		415	53/47/33	1,700 lbs	109 x 48 x 36	\$5,200
350041-114	DR250/DR300/DR350	560	33/28/23	2,500 lbs	144 x 59 x 30	\$5,850
350041-81Z		845	50/42/34	2,600 lbs	144 x 59 x 36	\$7,160

Notes: (1) 54 Gallon fuel tank is not UL 142 or UL2200 listed. All sub-base standby fuel tanks, except the 54 gallon, are double walled.

\*\*Other fuel tank sizes are available upon request.

LOAD

UL LISTED  
AUTOMATIC TRANSFER SWITCH  
FOR USE IN  
OPTIONAL STANDBY SYSTEMS  
4876  
KELLER TECHNOLOGIES, L.P.

L3

L7

L2

L6

RNATE

NEUTRA

⚠ PELIGRO  
⚠ DANGER



⚠ Peligroso voltaje  
Will shock, burn  
if come in contact  
⚠ No touch  
until ALL power  
is disconnected

Tension elevada  
Risque de choc,  
brûlures et même  
la mort. Ne toucher  
qu'après avoir  
débranché TOUTES  
les alimentations.

WARNING  
TO PROTECT  
AGAINST SHOCK  
OR ACCIDENT,  
Hazardous Voltage  
ALL SOURCES OF SUPPLY  
BEFORE  
SERVICING.  
HANDLE  
SUPPLIED FOR  
SERVICING  
ONLY

71 9 70 6  
BACK FRONT BACK FRONT  
72 8 69 7

# AUTOMATIC TRANSFER SWITCHES

# ASCO TRANSFER SWITCHES

Manufactured By Schneider Electric

## 185 SERIES

Amps	Shipping				MSRP	
	Weight NEMA 1	Weight NEMA 3R	Dimensions (in) NEMA 1	Dimensions (in) NEMA 3R	NEMA 1	NEMA 3R

### NON-SERVICE ENTRANCE RATED

100	50 lbs	49 lbs	21 x 15 x 31	21 x 15 x 31	\$910	\$990
200	48 lbs	49 lbs	21 x 15 x 31	21 x 15 x 31	\$1,210	\$1,290
230	44 lbs	49 lbs	21 x 15 x 31	21 x 15 x 31	\$1,340	\$1,420
260	79 lbs	118 lbs	21 x 15 x 31	21 x 15 x 31	\$1,920	\$2,340
400	110 lbs	118 lbs	29 x 15 x 52	29 x 15 x 52	\$2,090	\$2,510

### SERVICE ENTRANCE RATED

100	61 lbs	45 lbs	23 x 15 x 44	23 x 15 x 44	\$1,420	\$1,500
200	68 lbs	56 lbs	23 x 15 x 44	23 x 15 x 44	\$1,500	\$1,580
400	177 lbs	216 lbs	41 x 13 x 52	41 x 13 x 52	\$4,650	\$5,070

### ASCO 185 SERIES ACCESSORIES

ASCO Part #	Description	MSRP
K732212-003	Strip Heater w/ Thermostat <sup>(1)</sup>	\$350
K373314	14A/14B Auxiliary Contacts <sup>(2)</sup>	\$300

Notes: (1) External 120V source required. (2) For 100/200 Amp only



## 300 SERIES

Amps	Shipping				MSRP			
	Weight NEMA 1	Weight NEMA 3R	Dimensions (in) NEMA 1	Dimensions (in) NEMA 3R	NEMA 1 2-Pole	NEMA 3R 2-Pole	NEMA 1 3-Pole	NEMA 3R 3-Pole

### NON-SERVICE ENTRANCE RATED

30	72 lbs	87 lbs	25 x 20 x 38	25 x 19 x 42	\$1,520	\$1,750	\$1,720	\$1,950
70	72 lbs	87 lbs	25 x 20 x 38	25 x 19 x 42	\$1,570	\$1,800	\$1,760	\$1,990
104	72 lbs	87 lbs	25 x 20 x 38	25 x 19 x 42	\$1,610	\$1,840	\$1,800	\$2,030
150	72 lbs	87 lbs	25 x 20 x 38	25 x 19 x 42	\$1,760	\$1,990	\$1,960	\$2,190
200	72 lbs	87 lbs	25 x 20 x 38	25 x 19 x 42	\$2,050	\$2,280	\$2,240	\$2,470
230	125 lbs	140 lbs	25 x 20 x 55	25 x 21 x 58	\$2,370	\$2,600	\$2,580	\$2,810
260	125 lbs	140 lbs	25 x 20 x 55	25 x 21 x 58	\$2,570	\$2,800	\$2,750	\$2,980
400	125 lbs	140 lbs	25 x 20 x 55	25 x 21 x 58	\$2,860	\$3,090	\$3,340	\$3,570
600	324 lbs	328 lbs	31 x 24 x 70	31 x 25 x 70	\$5,600	\$6,040	\$5,960	\$6,400
800	460 lbs	543 lbs	41 x 27 x 79	41 x 27 x 79	\$6,170	\$6,610	\$6,840	\$7,280
1,000	460 lbs	543 lbs	41 x 27 x 79	41 x 27 x 79	\$8,540	\$8,980	\$9,310	\$9,750

### SERVICE ENTRANCE RATED

70	408 lbs	520 lbs	43 x 20 x 55	43 x 23 x 55	\$4,230	\$4,860	\$4,480	\$5,110
100	408 lbs	520 lbs	43 x 20 x 55	43 x 23 x 55	\$4,280	\$4,910	\$4,520	\$5,150
150	408 lbs	520 lbs	43 x 20 x 55	43 x 23 x 55	\$4,910	\$5,540	\$5,070	\$5,700
200	408 lbs	520 lbs	43 x 20 x 55	43 x 23 x 55	\$5,150	\$5,780	\$5,510	\$6,140
225	408 lbs	520 lbs	43 x 20 x 55	43 x 23 x 55	\$6,330	\$6,960	\$6,550	\$7,180
250	420 lbs	530 lbs	43 x 20 x 55	43 x 23 x 55	\$6,450	\$7,330	\$6,830	\$7,710
400	420 lbs	530 lbs	43 x 20 x 55	43 x 23 x 55	\$7,220	\$8,100	\$7,670	\$8,550
600	870 lbs	1,180 lbs	45 x 35 x 98	45 x 35 x 98	\$9,310	\$10,740	\$9,610	\$11,040
800	1,470 lbs	1,540 lbs	45 x 35 x 98	48 x 40 x 103	\$9,680	\$11,940	\$10,130	\$12,390
1,000	1,470 lbs	1,540 lbs	45 x 55 x 98	48 x 69 x 103	\$15,870	\$18,860	\$16,340	\$19,330

### ASCO 300 SERIES ACCESSORIES

ASCO Part #	Description	MSRP
11BE	Deluxe Engine Exerciser	\$350
44A	Strip Heater Wired External	\$300
44G	Strip Heater Wired to the Load	\$380



FOR MORE ASCO PRODUCTS, OPTIONS, AND ACCESSORIES, PLEASE CONTACT YOUR WINCO SALES REPRESENTATIVE  
L-1026/REV A



**POWER  
TAKE-OFF**

# PTO GENERATORS

Model <sup>(1)</sup>	Output		PTO Input Speed RPM	Motor Starting <sup>(4)</sup>	Receptacles <sup>(5)</sup>			Shipping		MSRP
	Running Watts	Amps <sup>(2)</sup>			120 Volt	240 Volt	Full Power	Weight	Dimensions (in)	
<b>1-PH 120/240</b>										
W10PTOS	10,000	42	515	3 HP	5-20R	-	14-60R	175 lbs	37 x 16 x 25	\$1,740
W15PTOS	15,000	62	515	5 HP	5-20R	-	14-60R	234 lbs	37 x 16 x 25	\$2,240
30PTOC4-03	29,600	123	540	10 HP	5-20R	6-50R	Anderson	452 lbs	46 x 29 x 28	\$3,600
30PTOT4-03	29,600	123	1000	10 HP	5-20R	6-50R	Anderson	452 lbs	46 x 29 x 28	\$3,670
50PTOC4-03	50,000	208	540	20 HP	5-20R	6-50R	Anderson	745 lbs	46 x 29 x 28	\$5,200
50PTOT4-03	50,000	208	1000	20 HP	5-20R	6-50R	Anderson	745 lbs	46 x 29 x 28	\$5,300
W70PTO-3	69,000	287	540	25 HP	5-20R	-	Anderson	978 lbs	55 x 29 x 32	\$8,240
W70PTOS-3	69,000	287	1000	25 HP	5-20R	-	Anderson	1,032 lbs	55 x 29 x 32	\$8,400
W85FPTOS-3	85,000	354	1000	35 HP	5-20R	6-50R	Anderson	1,040 lbs	55 x 29 x 32	\$8,940
W100FPTOS-3	100,000	416	1000	45 HP	5-20R	6-50R	Anderson	1,139 lbs	55 x 29 x 36	\$10,390
W150FPTOS-3	150,000	625	1000	60 HP	5-20R	6-50R	-	1,488 lbs	55 x 29 x 36	\$12,360
<b>3-PH 120/208</b>										
30PTOC4-04	31,600	87	540	11 HP	5-20R	6-50R	Anderson	472 lbs	46 x 29 x 28	\$3,970
30PTOT4-04	31,600	87	1000	11 HP	5-20R	6-50R	Anderson	472 lbs	46 x 29 x 28	\$4,040
50PTOC4-04	50,000	138	540	22.5 HP	5-20R	6-50R	Anderson	745 lbs	46 x 29 x 28	\$5,380
50PTOT4-04	50,000	138	1000	22.5 HP	5-20R	6-50R	Anderson	745 lbs	46 x 29 x 28	\$5,480
W75FPTOS-4	75,000	217	1000	30 HP	5-20R	-	Anderson	1,046 lbs	55 x 29 x 36	\$8,830
W105FPTOS-4	105,000	291	1000	50 HP	5-20R	6-50R <sup>(6)</sup>	Anderson	1,216 lbs	55 x 29 x 36	\$11,220
W145FPTOS-4	145,000	402	1000	70 HP	5-20R	6-50R <sup>(6)</sup>	-	1,482 lbs	55 x 29 x 36	\$13,140
<b>3-PH 120/240</b>										
30PTOC4-17	31,600	76	540	11 HP	5-20R	6-50R	Anderson	472 lbs	46 x 29 x 28	\$3,970
30PTOT4-17	31,600	76	1000	11 HP	5-20R	6-50R	Anderson	472 lbs	46 x 29 x 28	\$4,040
50PTOC4-17	50,000	120	540	22.5 HP	5-20R	6-50R	Anderson	745 lbs	46 x 29 x 28	\$5,380
50PTOT4-17	50,000	120	1000	22.5 HP	5-20R	6-50R	Anderson	745 lbs	46 x 29 x 28	\$5,480
W75FPTOS-17	78,000	217	1000	30 HP	5-20R	-	Anderson	1,046 lbs	55 x 29 x 32	\$8,830
W105FPTOS-17	105,000	253	1000	50 HP	5-20R	6-50R	Anderson	1,216 lbs	55 x 29 x 36	\$11,220
W145FPTOS-17	145,000	348	1000	70 HP	5-20R	6-50R	N/A	1,482 lbs	55 x 29 x 36	\$13,140
<b>3-PH 277/480</b>										
35PTOC4-18	36,000	43	540	12 HP	-	-	Anderson	472 lbs	46 x 29 x 28	\$3,970
35PTOT4-18	36,000	43	1000	12 HP	-	-	Anderson	472 lbs	46 x 29 x 28	\$4,040
55PTOC4-18	55,000	66	540	25 HP	-	-	Anderson	745 lbs	46 x 29 x 28	\$5,380
55PTOT4-18	55,000	66	1000	25 HP	-	-	Anderson	745 lbs	46 x 29 x 28	\$5,480
W85FPTOS-18	85,000	102	1000	35 HP	-	-	Anderson	1,040 lbs	55 x 29 x 32	\$8,830
W120FPTOS-18	120,000	144	1000	50 HP	-	-	Anderson	1,216 lbs	55 x 29 x 36	\$11,220
W165FPTOS-18	165,000	198	1000	70 HP	-	-	Anderson	1,516 lbs	55 x 29 x 36	\$13,140
<b>3-PH346/600</b>										
55PTOC4-21	55,000	53	540	25 HP	-	-	Anderson	745 lbs	46 x 29 x 28	\$5,480
55PTOT4-21	55,000	53	1000	25 HP	-	-	Anderson	745 lbs	46 x 29 x 28	\$5,580
W85FPTOS-21	85,000	82	1000	35 HP	-	-	Anderson	1,040 lbs	55 x 29 x 32	\$8,930
W120FPTOS-21	120,000	115	1000	50 HP	-	-	Anderson	1,216 lbs	55 x 29 x 36	\$11,320
W165FPTOS-21	165,000	159	1000	70 HP	-	-	Anderson	1,516 lbs	55 x 29 x 36	\$13,240

NOTES: (1) Required HP at PTO of tractor for full rated output. Each 2 HP of tractor power equals approximately 1 kW of electric power. (2) 1.0 power factor (3) Required HP at PTO of tractor for full rated output. Each 2 HP of tractor power equals approximately 1 kW of electric power. (4) Code G capacitor start motor. (5) All receptacles are NEMA coded.



# LEGACY WINCO PTO (while supplies last)

Model <sup>(1)</sup>	Output		PTO Input Speed RPM	Motor Starting	Receptacles			Shipping		MSRP
	Running Watts	Amps			120 Volt	240 Volt	Full Power	Weight	Dimensions (in)	
25PTOC-3	25,000	104	1000	10 HP	5-20R	6-50R	Anderson	330 lbs	33 x 26 x 24	\$2,900
35PTOC-3	35,000	146	540	15 HP	5/20R	6-50R	Anderson	544 lbs	44 x 28 x 28	\$4,070
50PTOC-3	50,000	208	540	25 HP	5-20R	6-50R	Anderson	620 lbs	44 x 29 x 28	\$5,250
50FPTOC-3	50,000	208	1000	25 HP	5-20R	6-50R	Anderson	621 lbs	44 x 29 x 28	\$4,900

## PTO ACCESSORIES

Description	Compatible Model	Shipping		MSRP
		Weight	Dimensions (in)	
<b>PTO TRAILERS</b>				
TDM76	W10PTOS/W15PTOS	60 lbs	36 x 16 x 10	\$310
97100-000	25kW - 50kW	202 lbs	60 x 33 x 10	\$700
TDM77	70kW - 165kW	324 lbs	52 x 18 x 37	\$1,350
<b>THREE POINT HITCH KITS</b>				
TPH241 - includes PTO shaft	10kW - 25kW	142 lbs	35 x 27 x 12	\$800
<b>PTO SHAFTS</b>				
SA11310 540 RPM (1 3/8" 6-spline x 1 3/8" 6-spline)	10kW - 15kW	24 lbs	49 x 9 x 9	\$250
SA12300 540RPM (1 3/8" 6-spline x 1 3/4" 20-spline)	70kW	54 lbs	50 x 8 x 9	\$590
54326-001 540 RPM (1 3/8" 6-spline x 1 3/8" 6-spline)	35kW - 55kW	40 lbs	49 x 9 x 9	\$320
54961-000 1000 RPM (1 3/8" 6-spline x 1 3/8" 21-spline)	35kW - 55kW	58 lbs	50 x 8 x 9	\$620
SA12310 (1 3/4" 20-spline x 1 3/4" 20-spline)	75kW - 145kW	54 lbs	50 x 8 x 7	\$650
SA12311 (1 3/4" 20-spline x 1 3/4" 21-spline)	85kW - 145kW	54 lbs	50 x 8 x 7	\$650
SA12320 (1 3/4" 20-spline x 1 3/4" 20-spline)	150kW - 165kW	65 lbs	50 x 8 x 7	\$1,030
<b>SQUARE D MANUAL TRANSFER SWITCH</b>				
100AMP 240V 2-POLE	SINGLE PHASE UNITS	37 lbs	33 x 12 x 10	\$480
200AMP 240V 2-POLE	SINGLE PHASE UNITS	70 lbs	34 x 23 x 11	\$1,100
400AMP 240V 2-POLE	SINGLE PHASE UNITS	72 lbs	50 x 30 x 11	\$2,900
100AMP 208/240V 3-POLE	THREE PHASE UNITS	40 lbs	33 x 12 x 10	\$1,040
200AMP 208/240V 3-POLE	THREE PHASE UNITS	80 lbs	34 x 26 x 11	\$1,200
200AMP 480V 3-POLE	480V UNITS	110 lbs	32 x 25 x 12	\$3,070

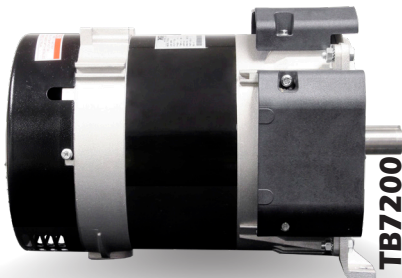


**TWO-BEARING**

# TWO-BEARING GENERATORS

## 3600 RPM

Model	Output		Motor Starting	Receptacles		Shipping		MSRP
	Running Watts	Amps		120 Volt	240 Volt	Weight	Dimensions (in)	
TB2400	2,400	20	1 HP	5-20R	-	34 lbs	14 x 9 x 9	\$390
TB4800	4,800	20	1.5 HP	5-20R	L14-30R	54 lbs	16 x 12 x 10	\$490
TB7200	7,200	30	3.5 HP	-	L14-30R	78 lbs	20 x 12 x 12	\$590



## 1800 RPM

MODEL	PART NUMBER		WATTS @ 125/40C			SHIP WEIGHT	MSRP
	WINDING 6	WINDING 311	06 240V 1-PH	311 208/240V 3-PH	311 480V 3-PH		
PI044D	350027-008	-	7,500	7,500	7,500	201 lbs	\$1,780
PI044E	-	350027-011	10,000	10,000	10,000	222 lbs	\$1,960
PI044F	-	-	12,500	12,000	12,500	232 lbs	\$2,090
PI044G	-	-	15,000	15,000	15,000	247 lbs	\$2,160
PI044H	350027-007	350027-000	17,500	16,800	17,500	271 lbs	\$2,330
PI144D	-	350027-001	21,000	20,000	20,000	301 lbs	\$2,410
PI144E	350005-031	350027-002	25,000	24,000	25,000	333 lbs	\$2,620
PI144F	350027-009	350027-003	27,500	26,400	27,500	352 lbs	\$2,680
PI144G	-	350027-004	30,000	30,000	30,000	388 lbs	\$3,040
PI144H	-	-	35,000	35,000	35,000	416 lbs	\$3,120
PI144J	-	350027-005	40,000	38,000	40,000	441 lbs	\$3,190
PI144K	-	350027-006	42,000	44,000	44,000	461 lbs	\$2,380
UCI224C	351810-1	351810-11	37,500	44,000	44,000	590 lbs	\$3,490
UCI224D	351810-2	351810-21	44,000	50,000	52,000	623 lbs	\$3,790
UCI224E	351810-3	351810-31	50,000	56,000	60,000	676 lbs	\$4,050
UCI224F	351810-4	351810-41	60,000	68,000	75,000	754 lbs	\$4,440
UCI224G	351810-5	351810-51	75,000	80,000	83,000	838 lbs	\$4,690
UCI274C	351811-11	351811-1	90,000	96,000	100,000	906 lbs	\$5,310
UCI274D	351811-21	351811-2	100,000	105,000	117,000	963 lbs	\$5,510
UCI274E	351811-31	351811-3	115,000	128,000	143,000	1,090 lbs	\$6,130
UCI274F	351811-41	351811-4	135,000	144,000	165,000	1,188 lbs	\$6,750
UCI274G	351811-8	-	150,000	160,000	185,100	1,299 lbs	\$7,080

# **WINCO<sup>®</sup>**

## **GENERATORS**

**Le Center, MN 56057**

**800-733-2112**

**[www.wincogen.com](http://www.wincogen.com)**

Pricing and Specifications are  
subject to change without notice.