

WINCO[®]
GENERATORS

2018 CATALOG

WWW.WINCOGEN.COM

FROM THE OWNERS

Thank you for looking into WINCO products and researching the WINCO brand. With so many options in the marketplace, we are grateful that you rely on us for your generator needs.

Above everything, we want to get the appropriate generator for you. Our products aren't for everyone or for every situation. Sometimes, we'll even refer you to a different brand because we value you more than a sale. Our generators are mostly for people who need their generator for...life rather than for leisure. Whether it is your farm, your critical care facility, your pump, your solar backup, your business, or your home; we make a generator that will power it and/or protect it. No consumer grade, plastic made, foreign private labeled engines here. No marketing gimmicks, just reliable products.

We are proud of our business, our relationships, and our product. All of these, working together, create an ecosystem where you don't get lost in a multi-billion dollar organization. When you buy a WINCO, you are not a dollar amount, you are a person.

Respectfully,

The Call Family

TABLE OF CONTENTS

PORTABLES

INDUSTRIAL _____	4
DYNA PROFESSIONAL _____	4
HOME POWER SYSTEMS _____	4
VEHICLE MOUNTED _____	5
PORTABLE ACCESSORIES _____	6

EMERGENCY STANDBY SYSTEMS

AIR-COOLED _____	8
LIQUID-COOLED _____	8
STANDBY ACCESSORIES _____	9
ASCO TRANSFER SWITCHES _____	10

DIESEL

DR SERIES _____	12
DIESEL FUEL TANKS _____	12
DE SERIES _____	13
PRIME MOBILE _____	13
PRIME DIESEL ACCESSORIES _____	13

POWER TAKE-OFF

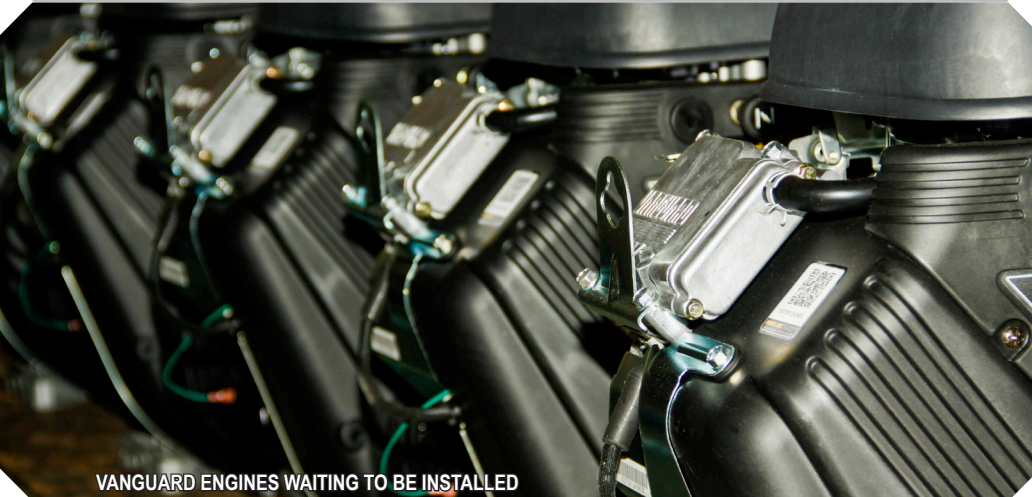
PTO GENERATORS _____	15
PTO ACCESSORIES _____	15

PORTABLES



PHOTO CREDIT BENSON VER HAGE ELECTRIC - WYCKOFF, NJ

We don't skimp on anything that goes into our industrial portable generators. Industrial engines from Honda, Briggs & Stratton, and Kohler paired with industrial generator ends allow our generators to work just as hard as you.



VANGUARD ENGINES WAITING TO BE INSTALLED

EVERY GENERATOR IS 100% LOAD TESTED

INDUSTRIAL SERIES (GASOLINE)⁽¹⁾

Model	Output		Engine	Fuel Tank Capacity	Receptacles			Shipping		MSRP
	Running Watts	Voltage			120 Volt	120/240 Volt	240 Volt	Weight	Dimensions (in)	
W3000H	2,400	120	Honda GC160	2 Qt	5-20R	-	-	72 lbs	25 x 19 x 19	\$750
WC6000HE	5,500	120/240	Honda GX340	7 Gal	5-20R	L14-30	-	226 lbs	35 x 25 x 24	\$2,350
W6010DE ⁽¹⁾	5,160	120/240	Kohler KD440	7 Gal	5-20R	L14-30	L6-30	268 lbs	37 x 29 x 33	\$4,660
W10000VE	9,600	120/240	B&S Vanguard	7 Gal	2 x 5-20R	14-60	L6-30	306 lbs	34 x 24 x 28	\$3,000
WL12000HE	10,800	120/240	Honda GX630	15 Gal	3 x 5-20R	14-60	L6-30	412 lbs	50 x 32 x 31	\$3,820
WL12000HE 50A	10,800	120/240	Honda GX630	15 Gal	3 x 5-20R	CS6365C	L6-30	412 lbs	50 x 32 x 31	\$3,850
WL18000VE	15,000	120/240	B&S Vanguard	15 Gal	3 x 5-20R L5-20	14-60	L6-30	489 lbs	50 x 27 x 32	\$4,800

NOTES: (1) The W6010DE is diesel fuel only.

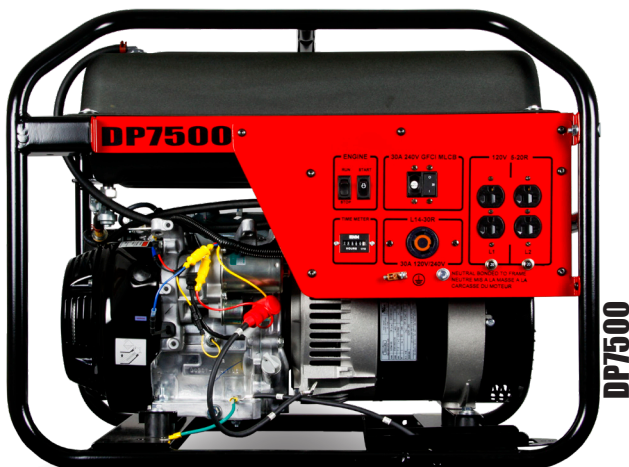


When it comes to generators for work, the old adage, "You get what you pay for" is spot-on. Avoid paying the price of a big-box retail store generator that comes standard with questionable construction and a fine-print warranty. Save the headaches and downtime with a generator built for what you need it to do.

DYNA PROFESSIONAL SERIES (GASOLINE)

Model	Output		Engine	Fuel Tank Capacity	Receptacles ⁽¹⁾		Shipping		MSRP
	Running Watts	Voltage			120 Volt	120/240 Volt	Weight	Dimensions (in)	
DP3000	3,000	120/240	Honda GX160	1 Gal	5-20R	-	104 lbs	34 x 24 x 27	\$1,110
DP5000	4,500	120/240	Honda GX270	7 Gal	5-20R	L14-30	178 lbs	29 x 21.5 x 27	\$1,800
DP7500	6,000	120/240	Honda GX390	7 Gal	5-20R	L14-30	210 lbs	29 x 21.5 x 27	\$2,100

NOTES: (1) All receptacles are NEMA coded.



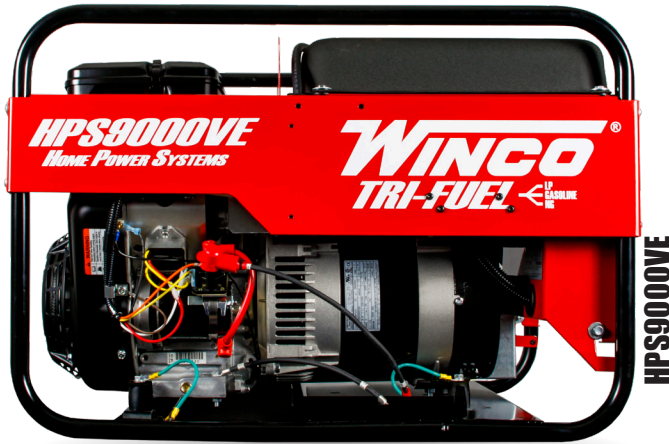
The DP Series are nice units at nice prices. They all come standard with a commercial 3-Year Warranty, full-panel GFCI protection, and Honda GX engines.

PORTABLES

HOME POWER SERIES (MULTI-FUEL)

Model	Output		Engine	Fuel Tank Capacity	GFCI Receptacles		Shipping		MSRP
	Running Watts ⁽⁵⁾	Voltage			120 Volt	120/240 Volt	Weight	Dimensions (in)	
HPS6000HE ⁽²⁾	5,500	120/240	Honda GX340	7 Gal	5-20R	L14-30	224 lbs	33 x 25 x 26	\$2,500
HPS9000VE	8,000	120/240	B&S Vanguard	7 Gal	2 x 5-20R	L14-30	267 lbs	33 x 25 x 27	\$2,980
HPS12000HE ⁽³⁾	10,800	120/240	Honda GX630	15 Gal	2 x 5-20R	L14-30 14-60 ⁽⁴⁾	460 lbs	50 x 40 x 36	\$4,320

NOTES: (1) Based on gasoline fuel. Derate 10% for LP Gas and 20% for Natural Gas. (2) HPS6000HE bi-fuel only (NG and Gasoline) (3) 4-Wheel dolly kit standard with HPS12000HE (4) The 14-60 receptacle is not GFCI protected.

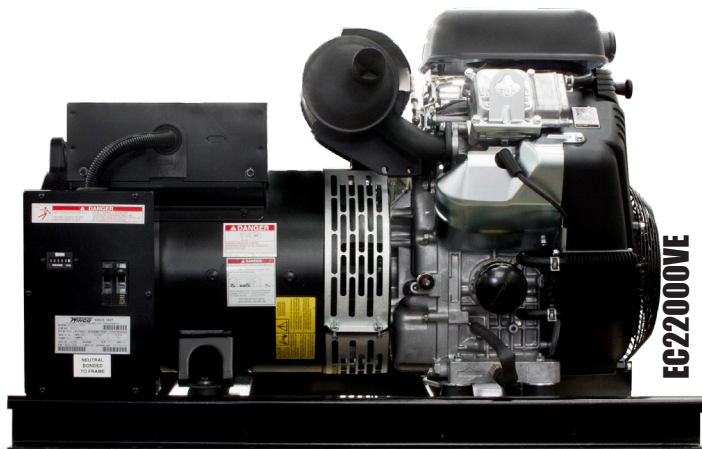


Multi-Fuel. Multi-Purpose. Multi-Functionability. Multi-Ways to convince the spouse you need a generator. We're bad at consumer grade so we just added some fuel choices to what would otherwise be a commercial unit. The market is full of big promises and cheap prices when it comes to multi-fuel. Those options are fine if the most important thing you need to power is your TV. If you have more valuable goods that need to be powered, our advice isn't to skimp on the generator.

VEHICLE MOUNTED (GASOLINE)

Model	Output		Engine	Fuel Tank Capacity	Receptacles ⁽¹⁾			Shipping		MSRP
	Running Watts	Voltage			120 Volt	120/240 Volt	240 Volt	Weight	Dimensions (in)	
EC18000VE	15,000	120/240	B&S Vanguard	N/A ⁽¹⁾	-	14-60	-	326 lbs	50 x 27 x 32	\$3,800
EC22000VE ⁽²⁾	19,000	120/240	B&S Vanguard	N/A ⁽¹⁾	-	-	-	495 lbs	50 x 27 x 32	\$5,300

(1) Optional 15 gallon fuel system available. See portable accessories for details. (2) 3-Phase options available. The EC22000VE is the largest air-cooled generator on the market. Just thought you should know.



The EC units are close cousins to our Industrial Portables. When properly installed and maintained, they will provide many hours of consistent power to whatever piece(s) of equipment they are providing electricity to.

PORTABLES

Part Number	Description	Compatible Model	Shipping		MSRP
			Weight	Dimensions (in) ⁽¹⁾	
DOLLY KITS					
16199-026	HPS SERIES 2-WHEEL DOLLY KIT	HPS6000HE/HPS9000VE	32 lbs	30 x 15 x 5	\$240
16199-036	W SERIES 2-WHEEL DOLLY KIT	WC6000HE/W6010DE/W10000VE	20 lbs	30 x 15 x 5	\$180
16199-039	DP SERIES 2-WHEEL DOLLY KIT	DP5000/DP7500	20 lbs	24 x 10 x 5	\$190
16199-032	WL SERIES 4-WHEEL DOLLY KIT	WL12000HE/WL18000VE - standard on HPS12000HE	57 lbs	26 x 26 x 9	\$280
GENERATOR COVERS					
64444-012	SMALL W/O DOLLY KIT	HPS6000HE/HPS9000VE	3 lbs	16 x 12 x 6	\$90
64444-014	SMALL W/ DOLLY KIT	HPS6000HE/HPS9000VE	3 lbs	16 x 12 x 6	\$90
64444-013	LARGE	HPS12000HE/WL12000HE/WL18000VE	5 lbs	16 x 12 x 6	\$90
64444-016	MEDIUM	DP5000/DP7500/WC6000HE/W6010DE/W10000VE	5 lbs	16 x 12 x 6	\$90
EMERGENCY TRANSFER SWITCH					
64488-000	60/30 AMP	HPS6000HE/HPS9000VE	45 lbs	16 x 16 x 13	\$440
64488-003	60/60 AMP	HPS12000HE	48 lbs	16 x 16 x 13	\$490
PLUG IN VOLT METER					
24743-000		ALL MODELS	1 lb	8 x 6 x 6	\$40
BATTERY CHARGER					
16287-000		6kW - 18kW	2 lbs	8 x 6 x 6	\$50
BATTERIES					
80765-012	12V U1 300 CCA	WC6000HE/W10000VE/WL12000HE/W6010DE/HPS12000HE	17 lbs	8 x 6 x 8	\$70
80765-013	12V GROUP 26 500 CCA	WL18000VE/EC18000VE/EC22000VE	20 lbs	9 x 8 x 8	\$150
MAINTENANCE KITS *For older models contact your WINCO representative					
16200-000	GC SERIES	W3000H	3.5 lbs	9 x 9 x 6	\$36
16200-001	GX160/200	DP3000	3.5 lbs	9 x 9 x 6	\$36
16200-002	GX270/340	WC6000HE/HPS6000HE	5.5 lbs	9 x 9 x 6	\$45
16200-003	GX270/340 LOW PROFILE	DP5000/DP7500	5.5 lbs	9 x 9 x 6	\$45
16200-007	VANGUARD 18HP	HPS9000VE/W10000VE	6 lbs	9 x 9 x 6	\$59
16200-005	VANGUARD 16HP	WL12000HE/HPS12000HE	6.5 lbs	9 x 9 x 9	\$84
16200-011	VANGUARD 35HP	WL18000VE	6.5 lbs	9 x 9 x 6	\$66
16200-014	KOHLER K440	W6010DE	5.5 lbs	9 x 9 x 6	\$100
PLUGS					
300137	NEMA 14-60 60AMP	W10000VE/WL12000HE/WL18000VE/HPS12000HE	1 lb	8 x 6 x 6	\$30
64492-000	NEMA L14-30 30AMP	DP5000/DP7500/WC6000HE/HPS6000HE/HPS9000VE	1 lb	8 x 6 x 6	\$30
64493-000	CS6365C 50AMP	WL12000HE 50A	1 lb	8 x 6 x 6	\$70
LOW PRESSURE FUEL SOLENOID					
64854-005		HPS6000HE/HPS9000VE	4 lbs	8 x 6 x 6	\$240
64854-009		HPS12000HE	4 lbs	8 x 6 x 6	\$240
FUEL SYSTEM					
19022-400	15 GAL FUEL SYSTEM	EC18000VE/EC22000VE	32 lbs	24 x 18 x 20	\$300

NOTES: (1) When ordering with a generator, most items are shipped in the generator box. (2) Replaces NEMA 14-60 60AMP receptacle

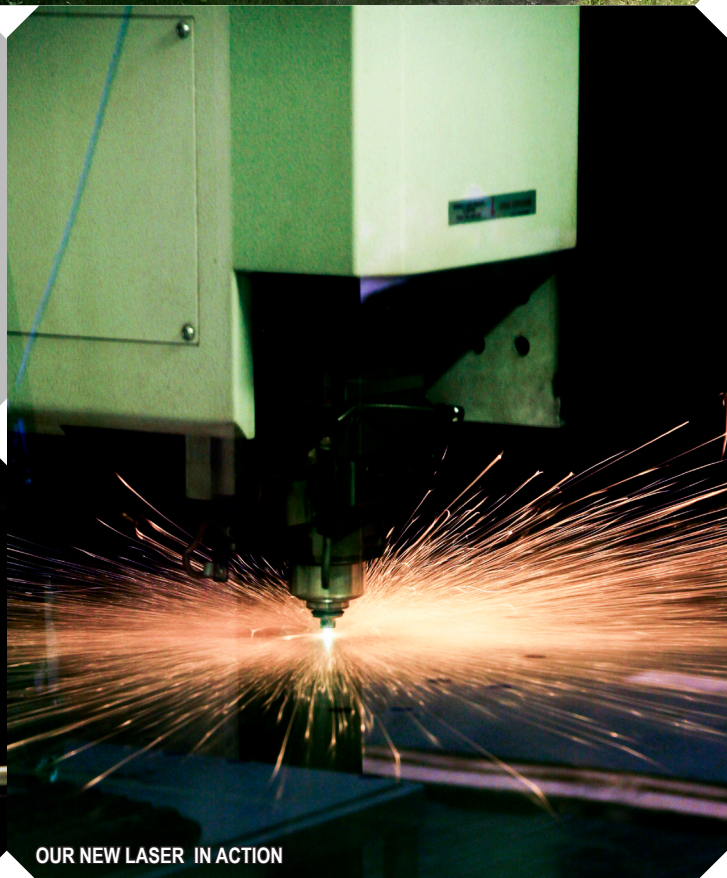


PACKAGED STANDBY SYSTEMS



PHOTO CREDIT CAM WAL ELECTRIC - SELBY, SD

Regardless of the application, when people buy a standby they need it to work. We put premium components in every model to ensure great reliability. But that's not the sole reason why people purchase a WINCO standby. It is mostly because when they do, they join a large service network that can help them locally. And if that network fails them (which sometimes happens), they can always call our service line and talk to a real person who knows something. You might be surprised at how rare a resource that is.



OUR NEW LASER IN ACTION



ALL OF OUR SHEET METAL FABRICATION IS DONE IN HOUSE

STANDBY & PRIME POWER

AIR-COOLED (VAPOR FUELED)

SINGLE PHASE

Model	Voltage	Output						CB Amps	Engine	Shipping		MSRP
		LP			Natural Gas					Weight	Dimensions (in)	
		Watts	kVa	Amps	Watts	kVa	Amps					
PSS8B2W	120/240	8,400	8.4	35	7,600	7.6	32	35	B&S Vanguard	400 lbs	45 x 31 x 32	\$4,100
PSS8B2W SOLAR	120/240	6,720	6.7	28	6,080	6	25.3	25	B&S Vanguard	460 lbs	49 x 34.5 x 34.75	\$4,600
PSS12H2W	120/240	12,000	12	50	10,000	10	41	50	Honda GX690	512 lbs	48 x 33 x 35	\$5,200
PSS12H2W SOLAR	120/240	8,000	8	33	9,600	9.6	40	40	Honda GX690	572 lbs	52 x 36.5 x 37.75	\$5,700
PSS20B2W	120/240	17,000	17	71	15,000	15	52	80	B&S Vanguard	995 lbs	61 x 38 x 43	\$8,100



While these units are exceptional for emergency standby, they are also proving their worth in remote prime applications. Whether it is powering a pump in the middle of a field or backup for solar panels at the cabin; these gensets just work.

PACKAGED STANDBY SYSTEMS

STANDBY ONLY

LIQUID-COOLED (VAPOR FUELED)

Model	Voltage	Output(1)						CB Amps	Engine	Shipping Housed		MSRP	
		LP			Natural Gas					Weight	Dimensions (in)	Open	Housed
		Watts	kVa	Amps	Watts	kVa	Amps						
PSS21-3	120/240	21,000	21	88	21,000	21	88	90	Z 2.8L	1,394 lbs	88 x 40 x 51	\$15,100	\$16,300
PSS30-3	120/240	30,000	30	125	27,120	35	113	100	Z 2.8L	1,478 lbs	88 x 40 x 51	\$16,100	\$17,300
PSS60-3	120/240	56,000	56	233	55,000	55	229	250	GM 5.7L	2,390 lbs	109 x 40.5 x 60	\$23,600	\$26,300
PSS90-3	120/240	80,000	80	333	90,000	90	375	350	GM 5.7L T	2,390 lbs	117 x 49 x 67	\$27,300	\$31,000
PSS150	120/240	125,000	125	520	125,000	150	625	600	PSI 8.8L TAC	4,700 lbs	136 x 86 x 92	\$48,860	\$54,980

Notes: (1) Output information is single phase, see spec sheets for 3-phase information. (2) Paralleling units available in 300kW, 450kW, and 600kW.



The PSS Liquid-Cooled units are not complex. We just combined the best components we could find (Industrial Engines, Stamford gensets, Deep Sea controllers, Square-D breakers, etc.), made all the sheet metal in-house, and then called the project complete.

Part Number	Description	Compatible Model	Shipping		MSRP
			Weight	Dimensions (in)	
ENGINE OIL HEATER					
15809-003		PSS12/PSS20	4 lbs	8.5 x 8.5 x 4	\$250
300484-5		PSS8	4 lbs	8.5 x 8.5 x 4	\$250
TRANSFER SWITCHES					
ASCO300 SERIES SEE PAGE 9					
VAPOR FUEL STRAINERS					
16243-000	3/4 in.	PSS8/PSS12/PSS20	2.5 lbs	8 x 6 x 6	\$50
98573-000	1 in.	PSS21/PSS30	4.5 lbs	8 x 6 x 6	\$50
98573-125	1 1/4 in.	PSS40/PSS60/PSS90	5 lbs	8 x 6 x 6	\$50
81138-001	2 in.	PSS150	5 lbs	8 x 6 x 6	\$50
BATTERIES					
80765-013	GROUP 26 500 CCA	PSS8/PSS12/PSS20	20 lbs	9 x 8 x 8	\$150
80765-010	GROUP 24 650 CCA	PSS21-PSS90 & DR/DE20-DR/DE65	20 lbs	11 x 8 x 9	\$160
80765-011	GROUP 31 900 CCA	PSS150 & DR90-DR130	25 lbs	11 x 8 x 9	\$230
80765-008	GROUP 4D 1050 CCA ⁽¹⁾	DR175-DR350	25 lbs	11 x 8 x 9	\$330
BATTERY HEATERS					
300484-3		PSS8/PSS12/PSS20	3 lbs	8 x 8 x 4	\$170
350279-4		PSS21-PSS150 & DR20-DR175	5 lbs	14 x 8 x 5	\$240
MAINTENANCE KITS *For older models, contact your WINCO representative					
16200-006	HONDA GXV630/690 GASEOUS	PSS12	5.5 lbs	9 x 9 x 9	\$71
16200-008	VANGUARD 16HP	PSS8	5.5 lbs	9 x 9 x 6	\$46
16200-009	VANGUARD 35HP	PSS20	6 lbs	9 x 9 x 6	\$53
FACTORY INSTALLED OPTIONS⁽¹⁾					
97753-018	BLOCK HEATER (600 WATT)	DE MODELS		FACTORY INSTALLED	\$130
99367	LP LIQUID WITHDRAWAL	PSS21-PSS150		FACTORY INSTALLED	\$1,050
352030-1	NFPA 110 LEVEL 1 COMPLIANT UPGRADE	PSS21-PSS150/DR MODELS		FACTORY INSTALLED	\$1,990
97737	EXCITATION BOOST SYSTEM	PSS21/PSS30/DR20/DR30		FACTORY INSTALLED	\$310
64921-003	PERMANENT MAGNET GENERATOR ⁽³⁾ MX341 1% Regulation	PSS60/PSS90/PSS150/DR45-DR175		FACTORY INSTALLED	\$630
64921-004	PERMANENT MAGNET GENERATOR MX321 0.5% Regulation	PSS60/PSS90/PSS150/DR45-DR175		FACTORY INSTALLED	\$930
72036-015	2 AMP BATTERY CHARGER	DE MODELS		FACTORY INSTALLED	\$130
72036-018	5 AMP BATTERY CHARGER W/ FAIL CONTACT	PSS21-PSS150/DR20-DR175		FACTORY INSTALLED	\$250
72036-019	10 AMP BATTERY CHARGER W/ FAIL CONTACT	PSS21-PSS150/DR20-DR175		FACTORY INSTALLED	\$430
VARIES	GENERATOR STRIP HEATER	PSS21-PSS150/DR MODELS		FACTORY INSTALLED	\$240
DIGITAL CONTROLLER OPTIONS					
802044-024	DSE4510 DIGITAL CONTROLLER	DE MODELS		SHIPPED LOOSE	\$600
358456-1	DSE2548 REMOTE ANNUNCIATOR	DSE7310		SHIPPED LOOSE	\$1,110
358456-11	DSE2510 REMOTE DISPLAY	DSE7310		SHIPPED LOOSE	\$610
352014	DSE890 WEBNET GATEWAY	DSE4510/DSE7310		FACTORY INSTALLED	\$650
N/A	DSE2157/2130 EXPANDABLE OUTPUTS/INPUTS	DSE7310		FACTORY INSTALLED	\$330

SEE PAGE 7

ALL DR MODELS

Notes: (1) 2 Batteries required for DR250-DR350 (2) Block heaters and battery chargers are standard on all liquid-cooled models except DE models. (3) Standard on DR250, DR300, & DR350



FUEL STRAINER



REMOTE ANNUNCIATOR

STANDBY ACCESSORIES

ASCO TRANSFER SWITCHES

185 SERIES



ASCO 185

Amps	Shipping				MSRP	
	Weight NEMA 1	Weight NEMA 3R	Dimensions (in) NEMA 1	Dimensions (in) NEMA 3R	NEMA 1	NEMA 3R Adder
NON-SERVICE ENTRANCE RATED						
100	44 lbs	49 lbs	21 x 15 x 31	21 x 15 x 31	\$910	\$80
200	44 lbs	49 lbs	21 x 15 x 31	21 x 15 x 31	\$1,210	\$80
230	44 lbs	49 lbs	21 x 15 x 31	21 x 15 x 31	\$1,340	\$90
260	79 lbs	118 lbs	21 x 15 x 31	21 x 15 x 31	\$1,920	\$420
400	79 lbs	118 lbs	29 x 15 x 52	29 x 15 x 52	\$2,090	\$420
SERVICE ENTRANCE RATED						
100	61 lbs	45 lbs	23 x 15 x 44	23 x 15 x 44	\$1,420.00	\$80
200	61 lbs	45 lbs	23 x 15 x 44	23 x 15 x 44	\$1,500.00	\$80
400	177 lbs	216 lbs	41 x 13 x 52	41 x 13 x 52	\$4,650.00	\$420

300 SERIES

Amps	Shipping				MSRP			
	Weight NEMA 1	Weight NEMA 3R	Dimensions (in) NEMA 1	Dimensions (in) NEMA 3R	NEMA 1 2-Pole	NEMA 1 3-Pole	NEMA 1 4-Pole	NEMA 3R Adder
NON-SERVICE ENTRANCE RATED								
30	72 lbs	87 lbs	25 x 20 x 38	25 x 19 x 42	\$1,520	\$1,720	\$1,910	\$230
70	72 lbs	87 lbs	25 x 20 x 38	25 x 19 x 42	\$1,570	\$1,760	\$1,950	\$230
104	72 lbs	87 lbs	25 x 20 x 38	25 x 19 x 42	\$1,610	\$1,800	\$1,980	\$230
150	72 lbs	87 lbs	25 x 20 x 38	25 x 19 x 42	\$1,760	\$1,960	\$2,140	\$230
200	72 lbs	87 lbs	25 x 20 x 38	25 x 19 x 42	\$2,050	\$2,240	\$2,440	\$230
230	125 lbs	140 lbs	25 x 20 x 55	25 x 21 x 58	\$2,370	\$2,580	\$2,770	\$230
260	125 lbs	140 lbs	25 x 20 x 55	25 x 21 x 58	\$2,570	\$2,750	\$2,960	\$230
400	125 lbs	140 lbs	25 x 20 x 55	25 x 21 x 58	\$2,860	\$3,340	\$3,630	\$230
600	324 lbs	328 lbs	31 x 24 x 70	31 x 25 x 70	\$5,600	\$5,960	\$6,340	\$440
800	460 lbs	543 lbs	41 x 27 x 79	41 x 27 x 79	\$6,170	\$6,840	\$7,250	\$440
1,000	460 lbs	543 lbs	41 x 27 x 79	41 x 27 x 79	\$8,540	\$9,310	\$10,150	\$440
SERVICE ENTRANCE RATED								
70	408 lbs	520 lbs	43 x 20 x 55	43 x 23 x 55	\$4,230	\$4,480	\$5,270	\$630
100	408 lbs	520 lbs	43 x 20 x 55	43 x 23 x 55	\$4,280	\$4,520	\$5,330	\$630
150	408 lbs	520 lbs	43 x 20 x 55	43 x 23 x 55	\$4,910	\$5,070	\$6,040	\$630
200	408 lbs	520 lbs	43 x 20 x 55	43 x 23 x 55	\$5,150	\$5,510	\$6,480	\$630
225	408 lbs	520 lbs	43 x 20 x 55	43 x 23 x 55	\$6,330	\$6,550	\$7,560	\$630
250	420 lbs	530 lbs	43 x 20 x 55	43 x 23 x 55	\$6,450	\$6,830	\$7,610	\$880
400	420 lbs	530 lbs	43 x 20 x 55	43 x 23 x 55	\$7,220	\$7,670	\$8,910	\$880
600	870 lbs	1,180 lbs	45 x 35 x 98	45 x 35 x 98	\$9,310	\$9,610	\$11,820	\$1,430
800	1,470 lbs	1,540 lbs	45 x 35 x 98	48 x 40 x 103	\$9,680	\$10,130	\$12,620	\$2,260
1,000	1,470 lbs	1,540 lbs	45 x 55 x 98	48 x 69 x 103	\$15,870	\$16,340	\$18,310	\$2,990

ASCO 185 SERIES ACCESSORIES

ASCO Part #	Description	MSRP
K732212-003	Strip Heater w/ Thermostat ⁽¹⁾	\$350
K373314	14A/14B Auxiliary Contacts ⁽²⁾	\$300

Notes: (1) External 120V source required. (2) For 100/200 Amp only

ASCO 300 SERIES ACCESSORIES

ASCO Part #	Description	MSRP
11BE	Deluxe Engine Exerciser	\$350
44A	Strip Heater Wired External	\$300
44G	Strip Heater Wired to the Load	\$380

FOR MORE ASCO PRODUCTS, OPTIONS, AND ACCESSORIES, PLEASE CONTACT YOUR WINCO SALES REPRESENTATIVE

L-1019/E

PAGE 10

2018 WINCO CATALOG

www.wincogen.com

DIESEL

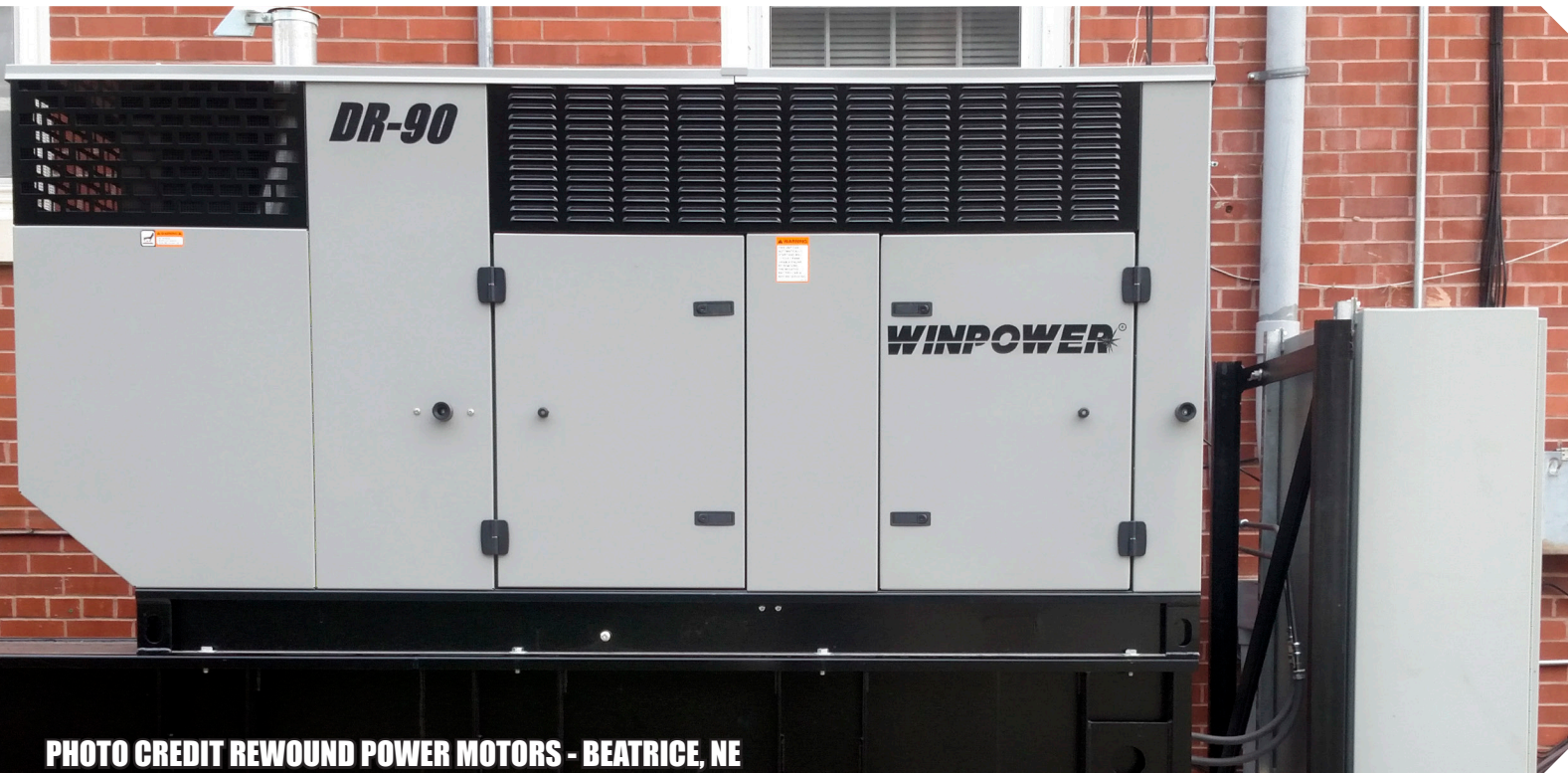


PHOTO CREDIT REWOUND POWER MOTORS - BEATRICE, NE

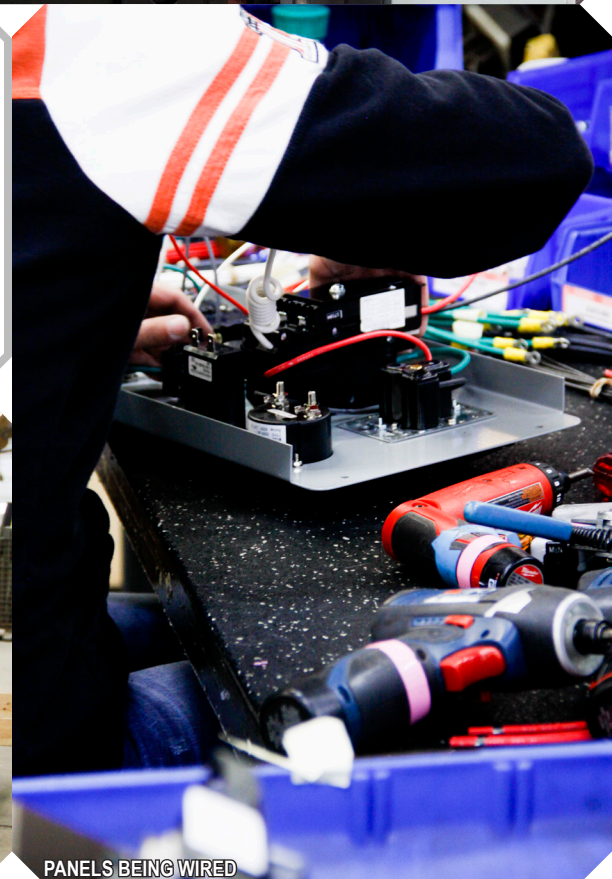
We've invested heavily in diesel engines so that you don't have to. We still have many Tier 3 Flex models assembled and available in 2018.

If you don't already know, our line goes something like this:

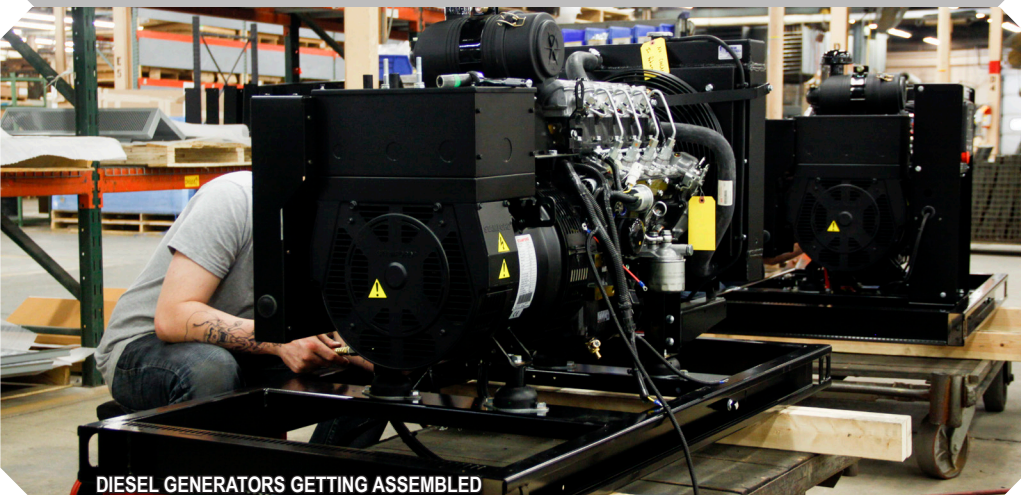
DE: Goes in a building or in a trailer.

DR: Goes inside/outside or on a trailer.

DX/RP: Goes on a trailer with switchable voltage.



PANELS BEING WIRED



DIESEL GENERATORS GETTING ASSEMBLED

STANDBY & PRIME POWER

DR SERIES

Model	Engine		Shipping				MSRP	
	Model	Tier ⁽¹⁾	Weight Open	Weight Housed	Open Dimensions (in)	Housed Dimensions (in)	Open Skid	Housing Adder
DR3014	Isuzu 4LE1 T	IVi	1,560 lbs	2,260 lbs	82 x 34 x 42	94 x 34 x 51	\$19,500	\$2,100
DR250F4 ⁽²⁾	FPT C87 TE1D TAC	III	6,300 lbs	8,740 lbs	144 x 59 x 64	181 x 59 x 84	\$64,200	\$7,800

Note: (1) All engines are Flex. (2) DR250 are available in 3-phase only.

PRIME POWER TRAILERS & ACCESSORIES

Description	Compatible Model	Shipping		MSRP
		Weight	Dimensions (in)	
100 GAL TANK, SINGLE AXEL, 5,000 GVWR	DR30	1,200 lbs	150 x 61 x 35	\$7,330
500 GAL TANK, TRIPLE AXLE, 18,000 GVWR	DR250	3,200 lbs	250 x 94 x 124	19,040
TOOL BOX	DR20/DR250		Factory Installed	\$400
SPARE TIRE & MOUNTING BRACKET	DR20/DR250		Factory Installed	\$360
CAM-LOCK RECEPTACLES (PER 400 AMP ROW)	DR20/DR250		Factory Installed	ASK FOR PRICING

Note: Receptacle package (2-50Amp CS63665 plug and 2-NEMA 5-20 duplex) standard with trailer.

STANDBY ONLY

DR SERIES

Model	Engine		Shipping				MSRP	
	Model	Tier ⁽¹⁾	Weight Open	Weight Housed	Open Dimensions (in)	Housed Dimensions (in)	Open Skid	Housing Adder
DR2014	Isuzu 4LE1	IVi	1,100 lbs	1,635 lbs	63 x 34 x 34	75 x 34 x 45	\$15,370	\$1,940
DR45F4	FPT N45 SM1 T	III	2,025 lbs	3,225 lbs	84 x 41 x 43	103 x 41 x 64	\$23,800	\$2,800
DR65F4	FPT N45 SM2 T	III	2,250 lbs	3,425 lbs	84 x 41 x 45	103 x 41 x 64	\$24,700	\$2,800
DR90F4	FPT N45 TM2 TAC	III	2,700 lbs	3,100 lbs	96 x 40 x 48	107 x 43 x 60	\$28,000	\$4,000
DR100F4	FPT N67 TM1 TAC	III	3,400 lbs	5,050 lbs	108 x 48 x 53	137 x 51 x 80	\$33,000	\$6,000
DR130F4	FPT N67 TM1 TAC	III	3,500 lbs	5,150 lbs	108 x 48 x 53	137 x 51 x 80	\$35,000	\$6,000
DR175F4	FPT N67 TE2 TAC	III	3,600 lbs	5,250 lbs	108 x 48 x 53	137 x 48 x 80	\$43,000	\$6,120
DR300F4 ⁽²⁾	FPT C10 TE1D TAC	III	6,500 lbs	8,940 lbs	144 x 59 x 63	180 x 59 x 87	\$72,000	\$7,800
DR350F4 ⁽²⁾	FPT C13 TE3X TAC	III	7,150 lbs	9,590 lbs	144 x 59 x 65	180 x 59 x 80	\$76,000	\$7,800

Note: (1) All engines are Flex. (2) DR300, and DR350 are available in 3-phase only.

FOR ACCESSORIES, SEE PAGE 10

PAGE 12

www.wincogen.com

PRIME POWER DE SERIES

Model	Output		Engine		Shipping			MSRP
	1-Phase	3-Phase	Model	Tier	Weight	Dimensions W/O Tank (in)	Dimensions W/ Tank (in)	
DE2014	17,000	20,000	Isuzu 4LE1	IVi	800 lbs	49 x 25 x 34	54 x 34 x 44	\$11,900
DE3014	30,000	30,000	Isuzu 4LE1 T	IVi	975 lbs	57 x 25 x 43	57 x 34 x 52	\$15,200

Model	Output		Rotorcomp Compressor	Engine		Shipping		MSRP
	1-Phase	3-Phase		Model	Tier	Weight	Dimensions (in)	
DE4040F ⁽¹⁾	33,000	40,000	NK 31	FPT N45 SM2	III	2,250 lbs	70 x 62 x 34	\$25,000

Notes: (1) DE4040 comes standard with air compressor, 54 gallon fuel tank, block heater and battery charger.

MOBILE DIESEL

Model	Output		Engine		Tank Size	Shipping		MSRP
	1-Phase	3-Phase	Model	Tier		Weight	Dimensions	
RP25	19,700	20,000	Isuzu 4LE1FTP	III	175 gal	2,820 lbs	129 x 56 x 72	\$29,500
DX250	N/A	250,000	FPT C10 TE1D	III	500 gal	11,940 lbs	250 x 94 x 120	\$103,850

Note: DX250 includes three rows of camlocks.

DIESEL FUEL TANKS

Gallons	Hours Full Load	Compatible Model	Shipping		MSRP
			Weight ⁽²⁾	Dimensions	
54 ⁽¹⁾	29	DE Models/DR20	150 lbs	63 x 34 x 10	\$850
55	31	DR20	500 lbs	63 x 34 x 13	\$2,370
70	22	DR30	500 lbs	82 x 34 x 13	\$2,370
100	24/22	DR45/DR65	750 lbs	84 x 41 x 13	\$2,880
110	61	DR20	700 lbs	63 x 34 x 23	\$2,890
151	50	DR30	700 lbs	82 x 34 x 25	\$2,890
155	86/22	DR20/DR90	850 lbs	96 x 40 x 13	\$3,500
210	51/46	DR45/DR65	1,050 lbs	84 x 41 x 25	\$3,600
225	72	DR30	850 lbs	82 x 34 x 35	\$3,500
230	29/26/18	DR100/DR130/DR175	1,200 lbs	109 x 48 x 21	\$3,980
310	76/68	DR45/DR65	1,350 lbs	84 x 41 x 36	\$4,540
330	48	DR90	1,400 lbs	96 x 40 x 25	\$4,790
415	53/47/33	DR100/DR130/DR175	1,650 lbs	108 x 48 x 36	\$5,200
495	71	DR90	1,750 lbs	96 x 40 x 36	\$5,760
560	33/28/23	DR250/DR300/DR350	2,100 lbs	144 x 59 x 25	\$5,850
690	41/34/28	DR250/DR300/DR350	2,300 lbs	144 x 59 x 30	\$6,490
845	50/42/34	DR250/DR300/DR350	2,600 lbs	144 x 59 x 36	\$7,160

Notes: (1) 54 Gallon fuel tank is not UL142 or UL2200 listed. All sub-base standby fuel tanks, except the 54 gallon, are double walled. (2) Approximate dry weight.

**Other sizes available upon request.

POWER TAKE-OFF



PHOTO CREDIT CHARLOTTE ELECTRIC - CHARLOTTE, IA

For people who need a PTO generator, they don't need to spend time being sold on a WINCO. So we won't waste our breath or your attention.



TURNING PTO STATORS



25kW GENERATORS IN LINE TO BE TESTED

Model ⁽¹⁾	Output		PTO Input Speed RPM	Motor Starting ⁽⁴⁾	Receptacles ⁽⁵⁾			Shipping		MSRP
	Running Watts	Amps ⁽²⁾			120 Volt	240 Volt	Full Power	Weight	Dimensions (in)	
1-PH 120/240										
W10PTOS	10,000	42	515	3 HP	5-20R	N/A	14-60R	166 lbs	37 x 16 x 25	\$1,830
W15PTOS	15,000	62	515	5 HP	5-20R	N/A	14-60R	242 lbs	37 x 16 x 25	\$2,320
25PTOC-3	25,000	104	540 ⁽⁵⁾	10 HP	5-20R	6-50R	Anderson	330 lbs	33 x 26 x 24	\$3,100
35PTOC-3	35,000	146	540	15 HP	5/20R	6-50R	Anderson	534 lbs	44 x 28 x 28	\$4,850
50PTOC-3	50,000	208	540 ⁽⁵⁾	25 HP	5-20R	6-50R	Anderson	620 lbs	44 x 29 x 28	\$5,250
W70PTO-3	69,000	287	540	25 HP	5-20R	N/A	Anderson	1,066 lbs	55 x 29 x 32	\$7,960
W70PTOS-3	69,000	287	1000	25 HP	5-20R	N/A	Anderson	1,066 lbs	55 x 29 x 32	\$7,960
W85FPTOS	85,000	354	1000	35 HP	5-20R	6-50R	Anderson	1,066 lbs	55 x 29 x 32	\$8,800
W100FPTOS	100,000	416	1000	45 HP	5-20R	6-50R	Anderson	1,175 lbs	55 x 29 x 36	\$11,860
W150FPTOS	150,000	625	1000	60 HP	5-20R	6-50R	N/A	1,484 lbs	55 x 29 x 36	\$13,340

3-PH 120/208

75FPTOC-4	75,000	208	1000	40 HP	5-20R	6-50R ⁽⁶⁾	Anderson	742 lbs	50 x 29 x 28	\$6,400
W105FPTOS-4	105,000	291	1000	50 HP	5-20R	6-50R ⁽⁶⁾	Anderson	1,216 lbs	55 x 29 x 36	\$12,000
W145FPTOS-4	145,000	402	1000	70 HP	5-20R	6-50R ⁽⁶⁾	N/A	1,504 lbs	55 x 29 x 36	\$13,910

3-PH 120/240

45PTOC-17	45,000	108	540	20 HP	5-20R	6-50R	Anderson	558 lbs	44 x 29 x 28	\$4,930
W75FPTOS-17	78,000	217	1000	30 HP	5-20R	N/A	Anderson	1,066 lbs	55 x 29 x 32	\$8,720
W105FPTOS-17	105,000	253	1000	50 HP	5-20R	6-50R	Anderson	1,216 lbs	55 x 29 x 36	\$11,870
W145FPTOS-17	145,000	348	1000	70 HP	5-20R	6-50R	N/A	1,504 lbs	55 x 29 x 36	\$13,930

3-PH 277/480

W85PTOS-18	85,000	102	1000	35 HP	N/A	N/A	Anderson	1,066 lbs	55 x 29 x 32	\$8,720
W120FPTOS-18	120,000	144	1000	50 HP	N/A	N/A	Anderson	1,216 lbs	55 x 29 x 36	\$11,660
W165FPTOS-18	165,000	198	1000	70 HP	N/A	N/A	Anderson	1,504 lbs	55 x 29 x 36	\$13,540

NOTES: (1) Required HP at PTO of tractor for full rated output. Each 2 HP of tractor power equals approximately 1 kW of electric power. (2) 1.0 power factor (3) Required HP at PTO of tractor for full rated output. Each 2 HP of tractor power equals approximately 1 kW of electric power. (4) Code G capacitor start motor. (5) Optional factory installed 1000 RPM gearcase available. 25PTO requires purchase of splined adapter for 1000 RPM gearcase. (5) All receptacles are NEMA coded. (6) Output is 120/208 single phase.

PTO ACCESSORIES

Description	Compatible Model	Shipping		MSRP
		Weight	Dimensions (in)	
PTO TRAILERS & THREE POINT HITCH KIT				
SMALL	W10PTOS/W15PTOS	60 lbs	36 x 16 x 10	\$300
MEDIUM	25PTOC/35PTOC/50PTOC/75PTOC	194 lbs	60 x 33 x 10	\$650
LARGE	W70PTO-W165PTOS	282 lbs	52 x 18 x 37	\$1,350
TPH241 (PTO Shaft included)	W10PTOS/W15PTOS/25PTOC ⁽¹⁾	142 lbs	35 x 27 x 12	\$800
PTO SHAFTS				
SA11310 540 RPM (1 3/8"-6 spline x 1 3/8"-6 spline)	W10PTOS/W15PTOS	24 lbs	49 x 9 x 9	\$240
43990 540 RPM (1 1/8"-keyed x 1 3/8"-6 spline)	25PTOC	30 lbs	48 x 9 x 8	\$250
54326-1 540 RPM (1 3/8"-6 spline x 1 3/8"-6 spline)	35PTOC/45PTOC/50PTOC	40 lbs	49 x 9 x 9	\$310
54961 1000 RPM (1 3/8"-6 spline x 1 3/8"-21 spline)	1000 RPM 25kW - 75kW	58 lbs	50 x 8 x 9	\$600
SA12310 (1 3/4"-20 spline x 1 3/4"-20 spline)	W70/W75/W85/W100/W105/W120/W145	54 lbs	50 x 8 x 7	\$630
SA12311 (1 3/4"-20 Spline x 1 3/4"-21 spline)	W70/W75/W85/W100/W105/W120/W145	54 lbs	50 x 8 x 7	\$630
SA12320 (1 3/4"-20 spline x 1 3/4"-20 spline)	W150PTOS/W165PTOS	65 lbs	50 x 8 x 7	\$990
SPLINED ADAPTER⁽¹⁾				
44804-000	25PTOC	2 lbs	8 x 6 x 6	\$60
SQUARE D MANUAL TRANSFER SWITCH				
100AMP 240 2-POLE	SINGLE PHASE UNITS	36 lbs	33 x 12 x 10	\$510
200AMP 240 2-POLE	SINGLE PHASE UNITS	70 lbs	34 x 23 x 11	\$1,100
100AMP 208/240 3-POLE	THREE PHASE UNITS	40 lbs	33 x 12 x 10	\$1,040
200AMP 208/240 3-POLE	THREE PHASE UNITS	80 lbs	34 x 26 x 11	\$1,200
GEARCASE				
1000 RPM GEARCASE UPGRADE	25PTOC ⁽¹⁾ /50PTOC		FACTORY INSTALLED	\$120

(1) Splined adapter required for 25PTO 1000RPM and Three Point Hitch kit. Converts 25PTO from 1 1/8" keyed to 1 3/8"-6 spline.

POWER TAKE-OFF

WINCO®

GENERATORS



PRESENTED BY:

Le Center, MN 56057
800-733-2112
www.wincogen.com

Pricing and
Specifications are
subject to change
without notice.