

4

3

2

1

D

D

C

C

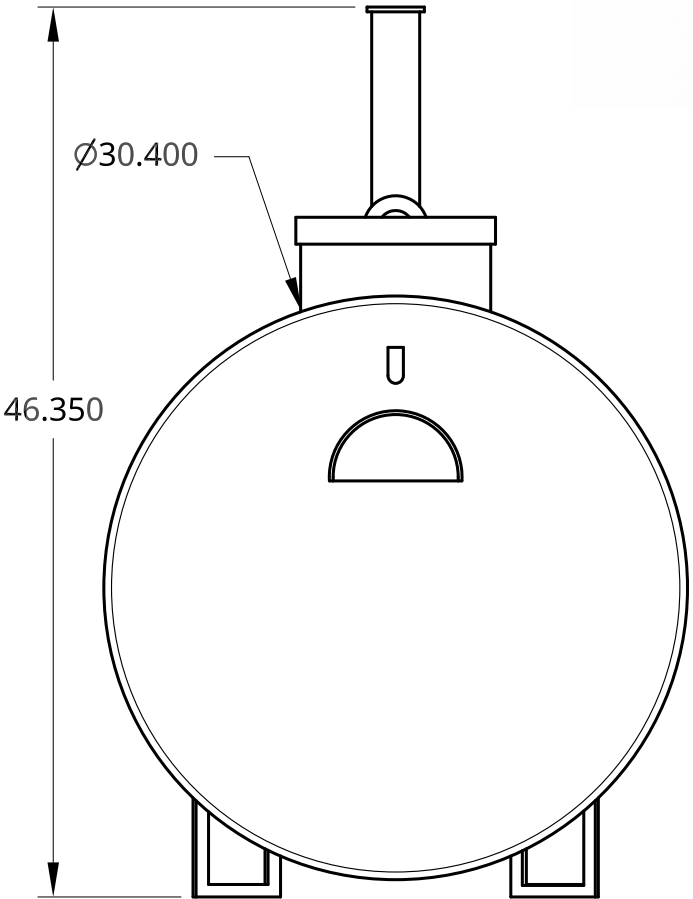
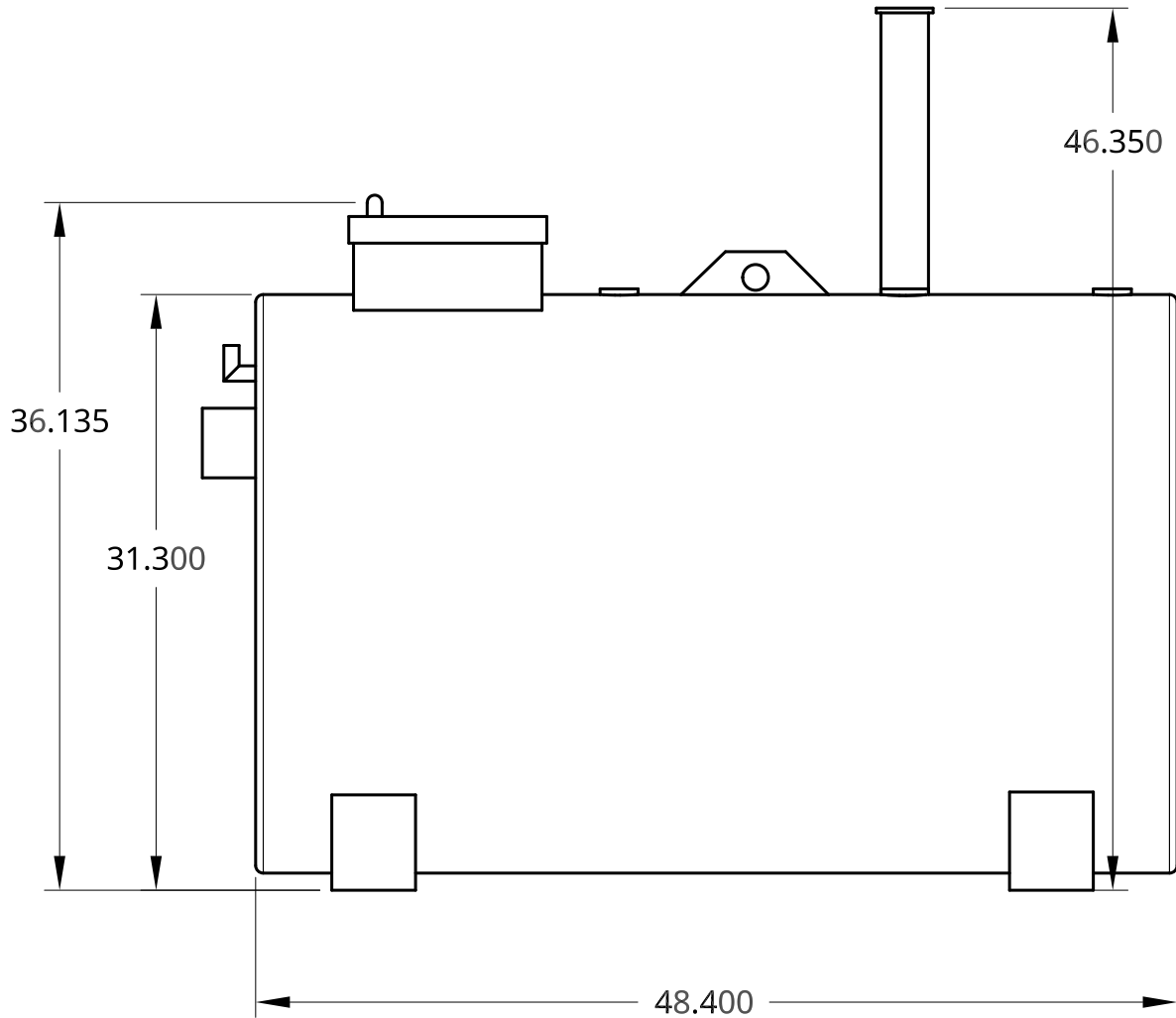
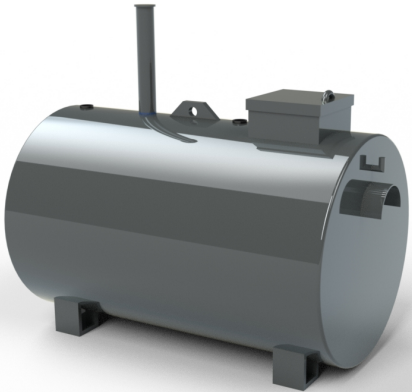
B

B

A

A

Capacity 450L/100G
Double Wall Generator Fuel Tan
ULC-S601 or ULC-S602



- DOUBLE WALL GENERATOR FUEL TANK - 100 GALLON / 450 LITRES
- Lockable Overfill Box with c/w fill
 - 2" Threaded Fittings
 - Lift Lug
 - ULC S601 or ULC S602
 - Emergency Vent
 - 1" Bottom Outlet
 - Legs
 - Vacuum Gauge
 - Emergency Vent (interstice)
 - 12 Gauge Steel
 - Includes All Hardware (ASTM Approved Fuel Lines & Fittings)
 - 30" x 48"
 - 210 lbs.
 - Made In Canada

| | | | | | | |
|---|----------|-------------------|------------|---|----------------------|-----------------|
| UNLESS OTHERWISE SPECIFIED, DIMENSIONS ARE IN INCHES .XX = ±.0- .XXX = ±.00- .XXXX = ±.000- SURFACE FINISH ✓ DO NOT SCALE DRAWING BREAK ALL SHARP EDGES AND REMOVE BURRS THIRD ANGLE PROJECTION ⊕ | | NAME | DATE | TITLE 100 Gallon Doulbe Wall UL601 and UL602 Aurora Generators Inc | | |
| | DRAWN | | 05/25/2017 | | | |
| | CHECKED | | | | | |
| | APPROVED | | | | | |
| | | | | SIZE B | DWG NO. F100UL-SA | REV. B |
| | | MATERIAL 12 GA | FINISH | SCALE 1:10 | WEIGHT 210 lbs | SHEET 1 of 1 |