



## **STANDBY GENERATORS** SELECTION GUIDE

PERMANENT BACKUP PROTECTION  
FOR POWER OUTAGES

**FROM THE POWER EXPERTS**



# 500,000 AMERICANS

ARE AFFECTED BY POWER OUTAGES EVERY DAY.\*

**Briggs & Stratton® Standby Generators can help you take charge.**

\*Source: CNN Tech, 2010

## WHAT IS A STANDBY GENERATOR?

Briggs & Stratton® Standby Generators provide automatic backup electricity for your air conditioner, appliances, lights, TVs or computers and give you the peace of mind to take charge during power outages.

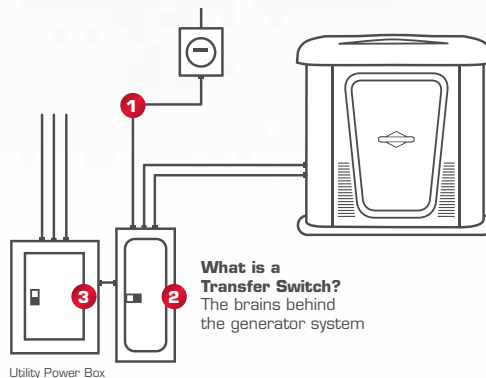
### A Standby Generator:

- Turns on and off automatically
- Is connected to your home's electrical system
- Senses power loss within seconds of an outage and transfers the electrical load to the generator
- Runs on Natural Gas [NG] or Liquid Propane [LP] Gas
- Can power select circuits or your whole house
- Is permanently installed by licensed professionals, such as your Authorized Briggs & Stratton Standby Dealer<sup>1</sup>

<sup>1</sup> Installations must strictly comply with all applicable codes, industry standards, laws, regulations and provided installation manual. Running engines give off carbon monoxide, an odorless, colorless, poisonous gas so it is important to keep exhaust gas away from any windows, doors, ventilation intakes or crawl spaces. The installation manual contains specific instructions related to generator placement in addition to NFPA 37, including the requirement that carbon monoxide detectors must be installed and maintained in your home.

## HOW DOES A STANDBY GENERATOR WORK?

- 1** When power fails, the automatic transfer switch recognizes the outage from the utility line.
- 2** The transfer switch signals the standby generator, which is then "switched" on and provides backup power to your home until power is restored.
- 3** When utility power is restored, the transfer switch will again signal the generator to shut down until it is needed again.



**What is a Transfer Switch?**  
The brains behind the generator system

Utility Power Box



## WHY BRIGGS & STRATTON®? WE ARE THE POWER EXPERTS.

- Providing reliable engine power for over 100 years
- Excellent comprehensive warranty – 3- or 4-year (model dependent) limited warranty covers both parts and labor for the full duration<sup>3</sup>
- A leading designer and manufacturer of automatic standby generators
- Reliable, durable and forward-thinking products
- Network of 2,600+ Authorized Standby Generator dealers for service and installation

<sup>1</sup> Installations must strictly comply with all applicable codes, industry standards, laws, regulations and provided installation manual. Running engines give off carbon monoxide, an odorless, colorless, poisonous gas so it is important to keep exhaust gas away from any windows, doors, ventilation intakes or crawl spaces. The installation manual contains specific instructions related to generator placement in addition to NFPA 37, including the requirement that carbon monoxide detectors must be installed and maintained in your home.

<sup>2</sup> This generator is rated in accordance with UL 2200 (stationary engine generator assemblies) and CSA 22.2 No. 100-04 (motors and generators) by UL (Underwriters Laboratories).

<sup>3</sup> Warranty details available at [www.briggsandstratton.com](http://www.briggsandstratton.com).

## BRIGGS & STRATTON® LEADING EDGE FEATURES

- Allowing for placement as close to 18" from your home (code & site dependent)<sup>1</sup>, our 8-10kW<sup>2</sup> and 16-20kW<sup>2</sup> units feature external automatic gas shut-off and frontal exhaust that have been tested against tough National Fire Protection Agency standards
- Durable Galvanneal steel enclosures and all-steel bases withstand temperatures greater than plastic and aluminum offering greater peace of mind
- Patented ACCM technology can manage up to two load-dependent air conditioners (or other thermostatically controlled HVAC appliances) without any additional hardware
- Premium engines designed to meet your power demands
- Infohub™ wireless monitoring allows to you to easily check your generator's status, receive maintenance notifications, or even send maintenance notifications to your dealer, all by simply using your computer, tablet or smart phone. (more information on pages 12 - 13 )

Trust the *proven power experts* at

4 Briggs & Stratton for complete peace of mind.



## THINGS TO KNOW BEFORE YOU BUY

All standby generators should be installed by a licensed professional, which could include an Authorized Briggs & Stratton® Standby Dealer or licensed electrician.<sup>1</sup>

### DOES YOUR HOME USE NATURAL GAS OR LIQUID PROPANE GAS?

Briggs & Stratton Standby Generators provide automatic backup power in a power outage and are permanently installed either to a natural gas line or a liquid propane fuel source.

### WHAT IS THE SIZE, IN AMPS, OF YOUR ELECTRICAL SERVICE?

A standby generator needs to be connected to the appropriate automatic transfer switch to operate properly. Transfer switches are sized by the amperage demands of a home's electrical service, and therefore are offered in ranges from 50 Amps to 200 Amps. Many newer homes include 200 Amp service to accommodate increasing demand for electrical power.

## THE DEALER ADVANTAGE

Your Authorized Briggs & Stratton® Standby Dealer is a great resource to help you find the perfect generator for your home.

1. Contact your standby dealer for a free estimate and to help determine the right generator for your home.  
(To find a dealer near you, visit our dealer locator at [POWERNOW.COM](http://POWERNOW.COM) or call 1-800-732-2989 (Monday - Friday 8 AM - 5 PM CST))
2. Your generator will be ordered by your dealer.<sup>††</sup>
3. Your dealer will deliver and install<sup>1</sup> the generator, complying to all of your city's codes and ordinances.

After installation, be sure to ask your dealer about an annual maintenance plan and Infohub™ to keep your generator running at peak performance.

<sup>1</sup> Installations must strictly comply with all applicable codes, industry standards, laws, regulations and provided installation manual. Running engines give off carbon monoxide, an odorless, colorless, poisonous gas so it is important to keep exhaust gas away from any windows, doors, ventilation intakes or crawl spaces. The installation manual contains specific instructions related to generator placement in addition to NFPA 37, including the requirement that carbon monoxide detectors must be installed and maintained in your home.

<sup>††</sup> Delivery time varies based on model.

# BRIGGS & STRATTON® POWER OPTIONS

What's most important is determining what you want powered in the event of a power outage.



## ESSENTIAL POWER



| PACKAGE # | DESCRIPTION                                      | POWERS      | ENGINE            | WARRANTY <sup>2</sup>      |
|-----------|--|-------------|-------------------|----------------------------|
| 040445    | 8kW <sup>2</sup> with 50A with 10-circuit Switch | 10 Circuits | Briggs & Stratton | Limited 3 Yr Parts & Labor |

## ESSENTIAL POWER - PLUS



| PACKAGE # | DESCRIPTION                                   | POWERS      | ENGINE                      | WARRANTY <sup>2</sup>      |
|-----------|---|-------------|-----------------------------|----------------------------|
| 040451    | 10kW <sup>2</sup> with 100A 16-circuit Switch | 16 Circuits | Briggs & Stratton           | Limited 3 Yr Parts & Labor |
| 040345    | 12kW <sup>2</sup> with 100A 16-circuit Switch | 16 Circuits | Briggs & Stratton           | Limited 3 Yr Parts & Labor |
| 040393    | 16kW <sup>2</sup> with 100A 16-circuit Switch | 16 Circuits | Briggs & Stratton Vanguard™ | Limited 4 Yr Parts & Labor |
| 040395    | 20kW <sup>2</sup> with 100A 16-circuit Switch | 16 Circuits | Briggs & Stratton Vanguard™ | Limited 4 Yr Parts & Labor |

## MANAGED WHOLE HOUSE POWER



| PACKAGE # | DESCRIPTION                                      | POWERS       | ENGINE                      | WARRANTY <sup>2</sup>      |
|-----------|--|--------------|-----------------------------|----------------------------|
| 040449    | 10kW <sup>2</sup> with 100A Transfer Switch      | All Circuits | Briggs & Stratton           | Limited 3 Yr Parts & Labor |
| 040450    | 10kW <sup>2</sup> with 200A Transfer Switch      | All Circuits | Briggs & Stratton           | Limited 3 Yr Parts & Labor |
| 040343    | 12kW <sup>2</sup> with 100A Transfer Switch      | All Circuits | Briggs & Stratton           | Limited 3 Yr Parts & Labor |
| 040400    | 12kW <sup>2</sup> with 200A Transfer Switch      | All Circuits | Briggs & Stratton           | Limited 3 Yr Parts & Labor |
| 040392    | 16kW <sup>2</sup> with 100A Transfer Switch      | All Circuits | Briggs & Stratton Vanguard™ | Limited 4 Yr Parts & Labor |
| 040401    | 16kW <sup>2</sup> with 200A Transfer Switch      | All Circuits | Briggs & Stratton Vanguard™ | Limited 4 Yr Parts & Labor |
| 040394    | 20kW <sup>2</sup> with 100A Transfer Switch      | All Circuits | Briggs & Stratton Vanguard™ | Limited 4 Yr Parts & Labor |
| 040346    | 20kW <sup>2</sup> with 200A Transfer Switch      | All Circuits | Briggs & Stratton Vanguard™ | Limited 4 Yr Parts & Labor |
| 040396    | 20kW <sup>2</sup> with Dual 200A Transfer Switch | All Circuits | Briggs & Stratton Vanguard™ | Limited 4 Yr Parts & Labor |
| 076180    | 25kW <sup>2</sup>                                | All Circuits | Briggs & Stratton           | Limited 4 Yr Parts & Labor |

## WHOLE HOUSE POWER



| PACKAGE # | DESCRIPTION       | POWERS       | ENGINE    | WARRANTY <sup>2</sup>      |
|-----------|-------------------|--------------|-----------|----------------------------|
| 076140    | 35kW <sup>2</sup> | All Circuits | GM Vortec | Limited 4 Yr Parts & Labor |
| 076150    | 48kW <sup>2</sup> | All Circuits | GM Vortec | Limited 4 Yr Parts & Labor |
| 076160    | 60kW <sup>2</sup> | All Circuits | GM Vortec | Limited 4 Yr Parts & Labor |

# BRIGGS & STRATTON® STANDBY GENERATORS



8-10kW<sup>2</sup> Generator  
28" x 24.4" x 35.1"



12kW<sup>2</sup> Generator  
35" x 40" x 39"



16-20kW<sup>2</sup> Generator  
48" x 34" x 31"



25kW<sup>2</sup> Generator  
71" x 32.3" x 37"



35kW<sup>2</sup> Generator  
84.4" x 39.5" x 42.5"



48-60kW<sup>2</sup> Generator  
48kW<sup>2</sup> - 98.5" x 39.5" x 44"  
60kW<sup>2</sup> - 98.5" x 39.5" x 47.8"

## POWER ACCESSORIES

| PACKAGE # | DESCRIPTION               |
|-----------|---------------------------|
| 071036    | 200A Transfer Switch      |
| 071058    | Dual 200A Transfer Switch |

<sup>2</sup> This generator is rated in accordance with UL 2200 (stationary engine generator assemblies) and CSA 22.2 No. 100-04 (motors and generators) by UL (Underwriters Laboratories).

<sup>3</sup> Warranty details available at [www.briggsandstratton.com](http://www.briggsandstratton.com).

Trust the *proven power experts* at

## WHAT ARE YOUR POWER NEEDS?

Understanding your power needs is important when choosing a standby generator. What's most important is determining what you want powered to keep your family comfortable in the event of a power outage.

### ESSENTIAL POWER

Power 10 essential circuits, such as your refrigerator, some lights, television and microwave.

### ESSENTIAL POWER - PLUS!

Power 16 essential circuits plus our patented Air Conditioning Control Module (ACCM) that allows you to power up to two air conditioners (load dependent).

### MANAGED WHOLE HOUSE POWER

Access to power all of your essential appliances but also have access to some additional high-wattage appliances, using patented Air Conditioning Control Module (ACCM) technology.



#### Need More Power?

Our optional **Load Control Center** can power two thermostatically controlled HVAC systems, such as two 5-ton air conditioners, (with no extra hardware required) while also managing power to four additional high wattage appliances, all while powering your home's basics.

### WHOLE HOUSE POWER

**True whole house comfort as if the power never went out.**



## BE IN CONTROL WHEREVER YOU GO

*Infohub™ wireless monitoring* tells you what you want to know about your generator – when you want to know it. Using your computer, tablet or smart phone, standby generator owners can instantly check their generator's system status from home or away.

### MONITOR

standby generator status, track usage and be aware of any generator maintenance needs before your next power outage.

### CHOOSE

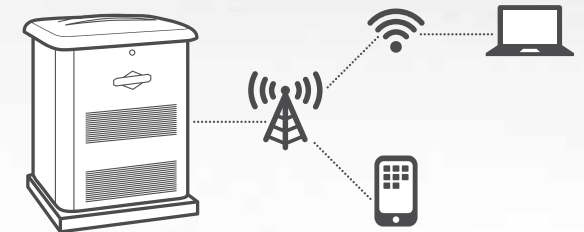
what you want to know with adjustable notification settings. Receive emails and text messages about your standby generator's performance.

### SET-UP

standby generator repair by sending maintenance notifications directly to your servicing dealer.

## HOW INFOHUB WORKS

Infohub™ constantly monitors the signal from your standby generator. When the generator's status changes, infohub™ instantly sends an alert to your email or phone.



Smart cellular-based system provides broad coverage and a reliable connection to your generator. Infohub™ wireless monitoring takes protecting your home and family from power outages to the next level.

## **KEEP YOUR SYSTEM RUNNING AT PEAK PERFORMANCE**

Complement your home generator system with service-friendly accessories that help ensure reliable operation, powerful performance and extend the life of your generator. Ask an Authorized Briggs & Stratton® Standby Generator Dealer for more information.

- Maintenance Kits
- Cold Weather Kits (8-20kW<sup>2</sup>)
- Monitoring Solutions
  - Basic Wireless Monitor (8-10kW<sup>2</sup>, 16-20kW<sup>2</sup>)
  - Remote System Status Panel – Hardwired
  - Infohub™ wireless monitoring
- Load Control Center
- Engine Coolant Heater (25-60kW<sup>2</sup>)

### **Disclaimer:**

Standby Generators are not for prime power or use where standby systems are legally required, for serious life safety or health hazards, or where lack of power hampers rescue or firefighting operations.



**BRIGGS&STRATTON**

POWER PRODUCTS GROUP, LLC  
MILWAUKEE, WI 53201 USA  
800 743 4115

Copyright ©2013. All rights reserved. HGS000353-12/13